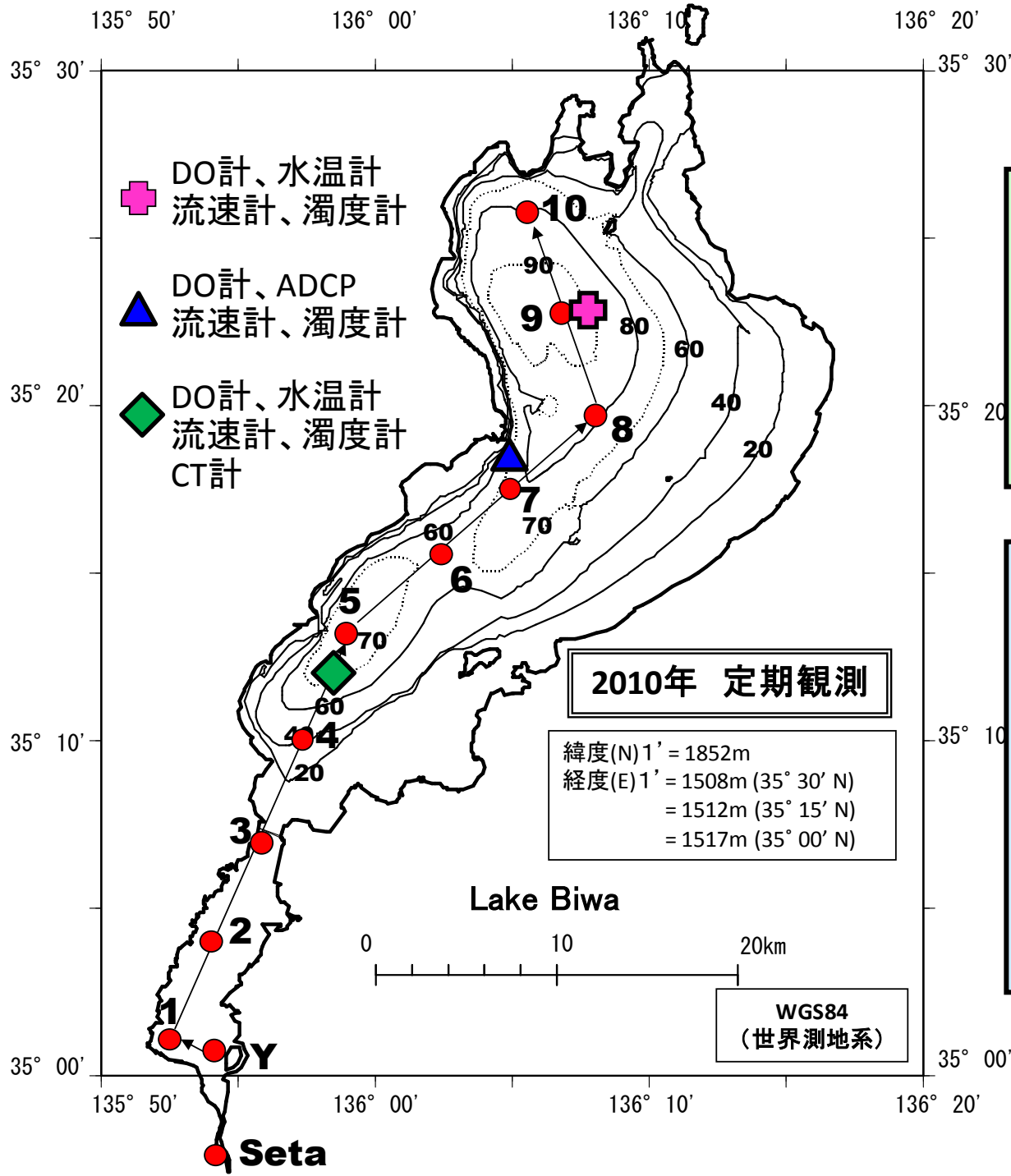


# びわ湖の水温と溶存酸素濃度の変動特性(4)



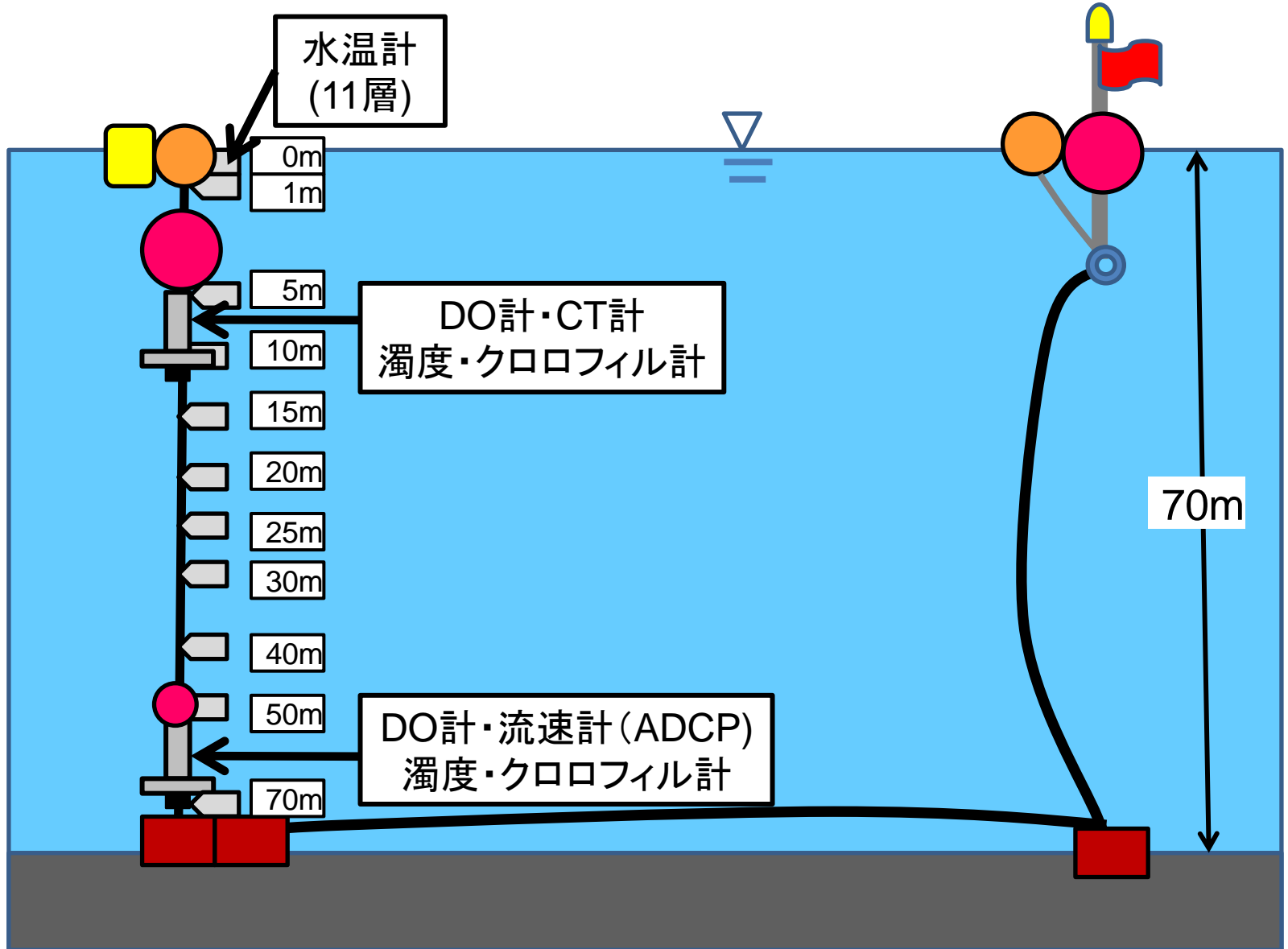
\*遠藤修一・石川俊之・片岡弘貴・藤田将成(滋賀大・教育)、  
奥村康昭(大阪電通大・工)、藤井智康(奈良教大・教育)



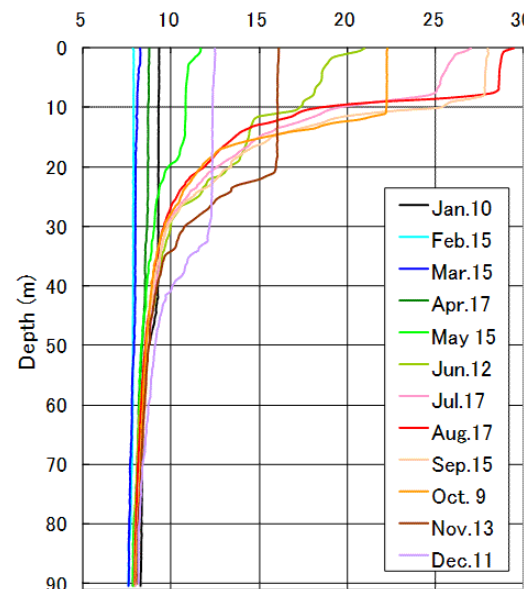
- ◆ 定期観測(毎月1回)**
- ・水温, 濁度, 電気伝導度
  - ・クロロフィル, 溶存酸素
  - ・透明度, pH
  - ・風向風速, 気圧, 気温

- ◆ 連続観測**
- ・水温、電気伝導度
  - ・濁度, クロロフィル
  - ・溶存酸素濃度
  - ・流向・流速
  - ・風向風速, 気圧, 気温  
湿度

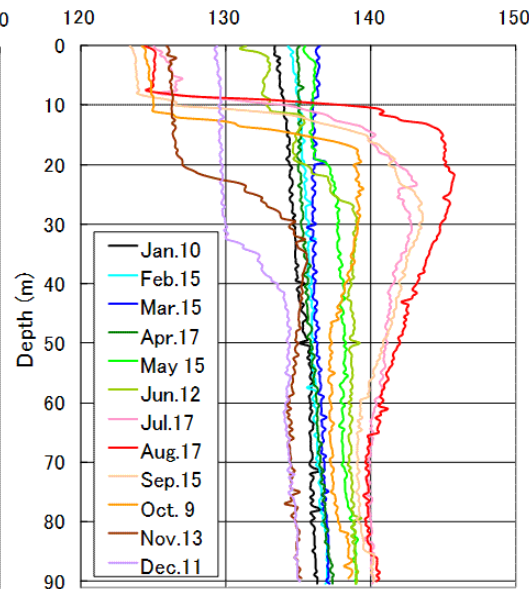
# 係留図



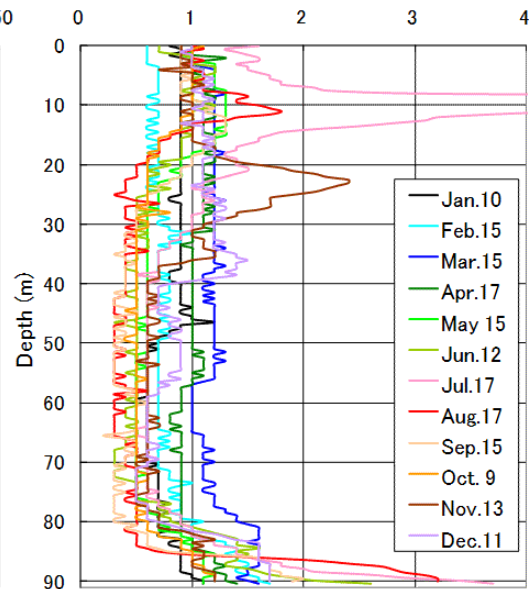
水温 Water Temperature (°C)



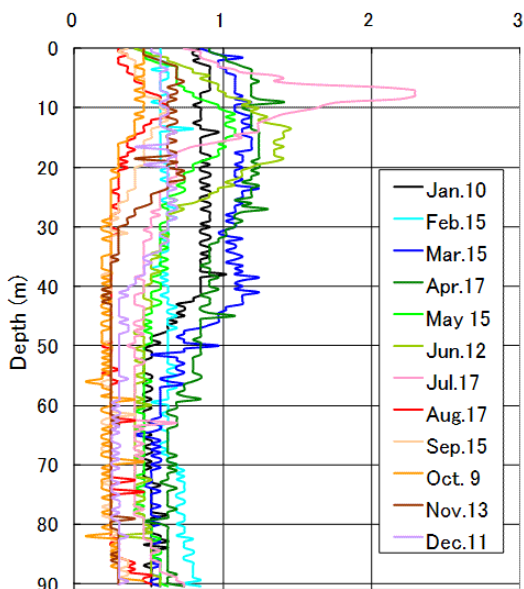
電気伝導度 (25°C換算) Electrical Conductivity ( $\mu\text{S/cm}$ )



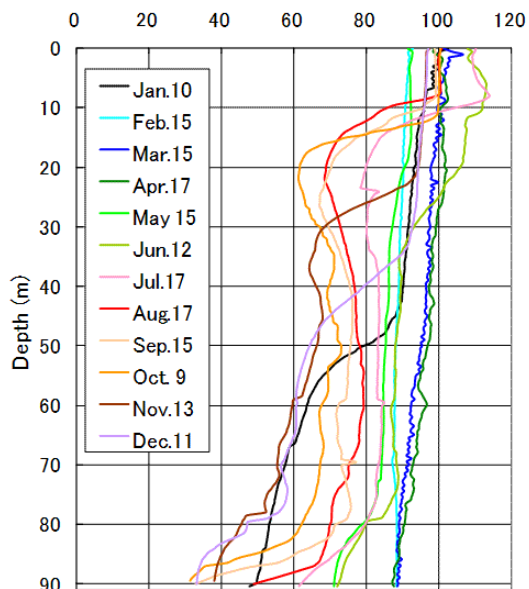
濁度 Turbidity (NTU)



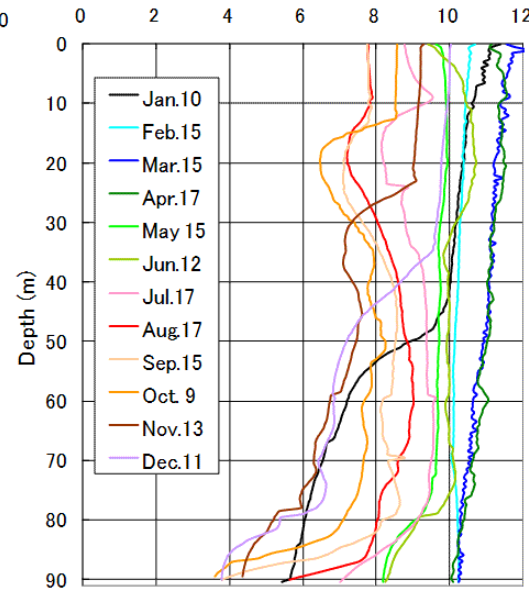
クロロフィル Chlorophyll a (ppb)



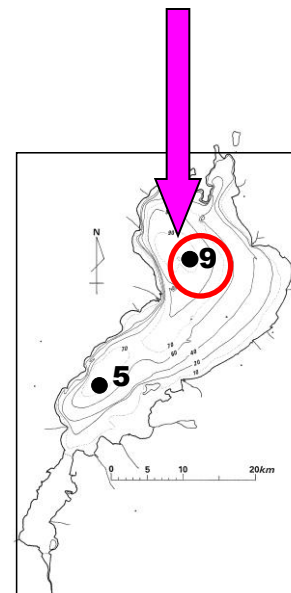
溶存酸素飽和度 Dissolved Oxygen (%)



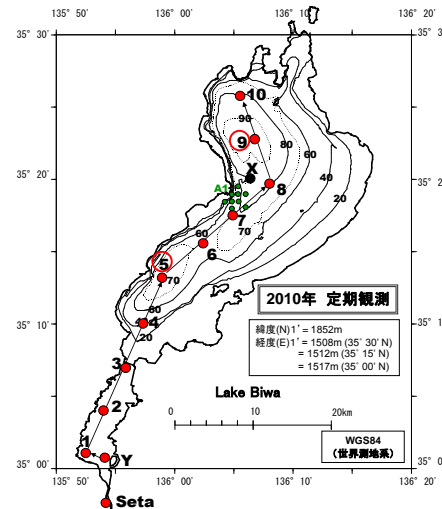
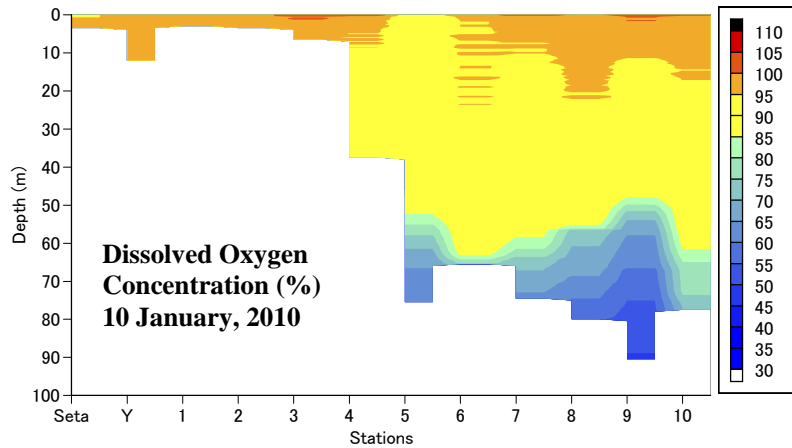
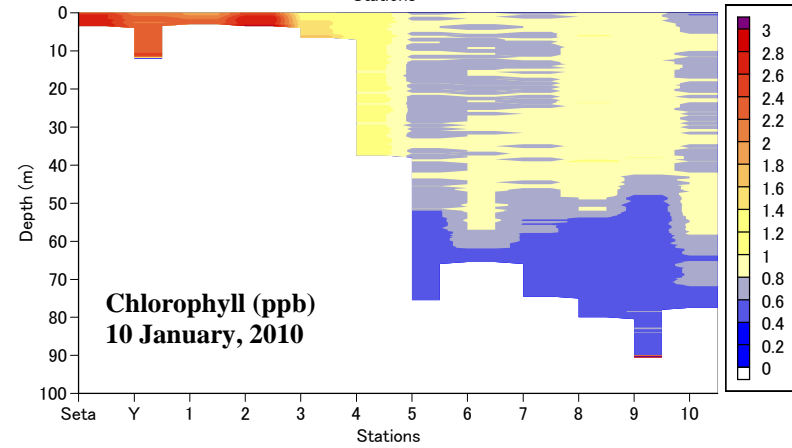
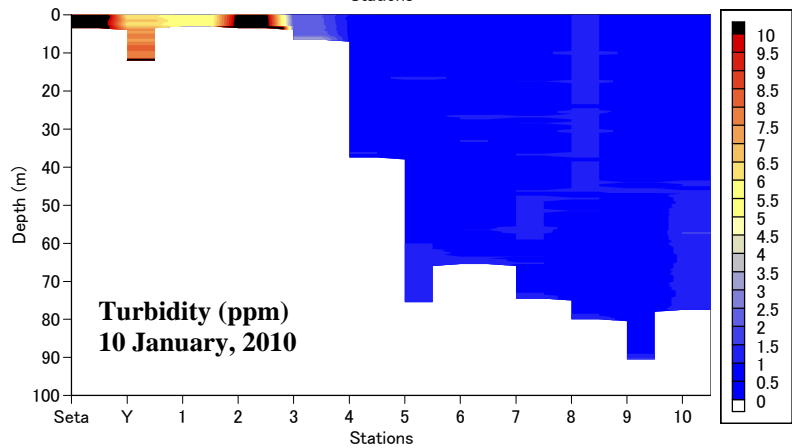
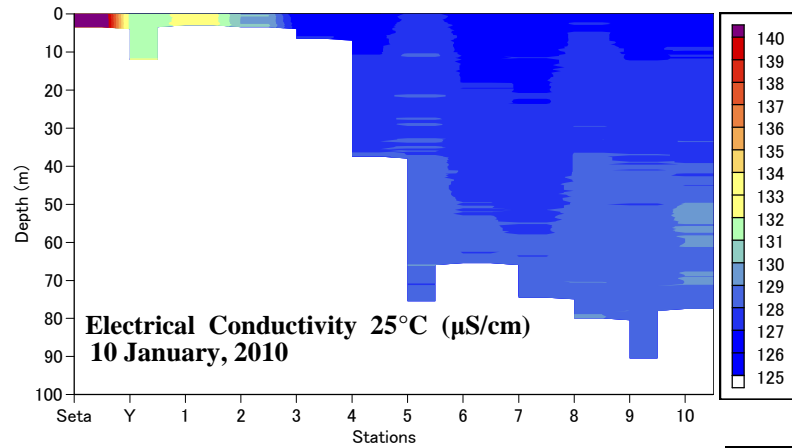
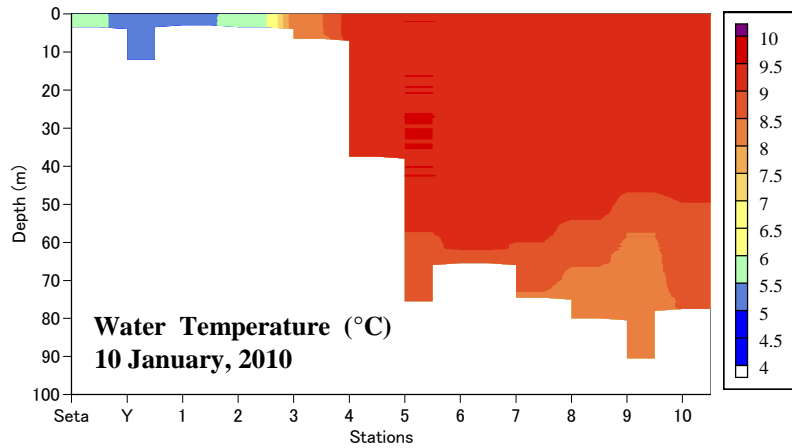
溶存酸素濃度 Dissolved Oxygen (mg/L)



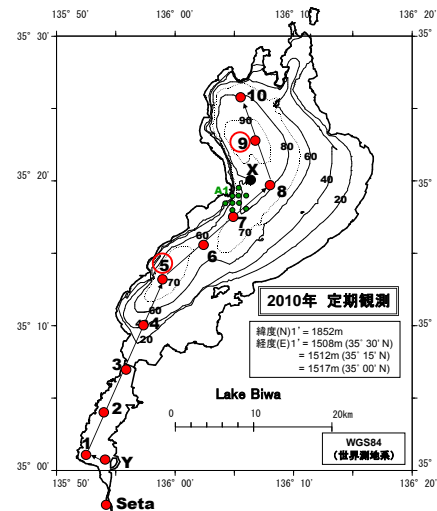
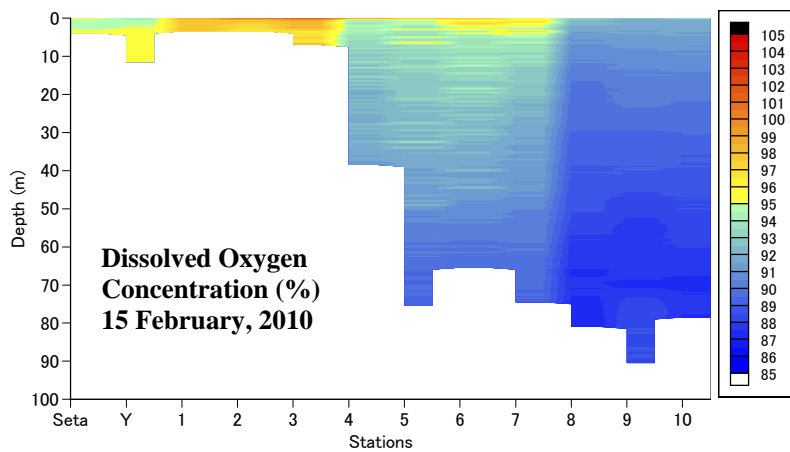
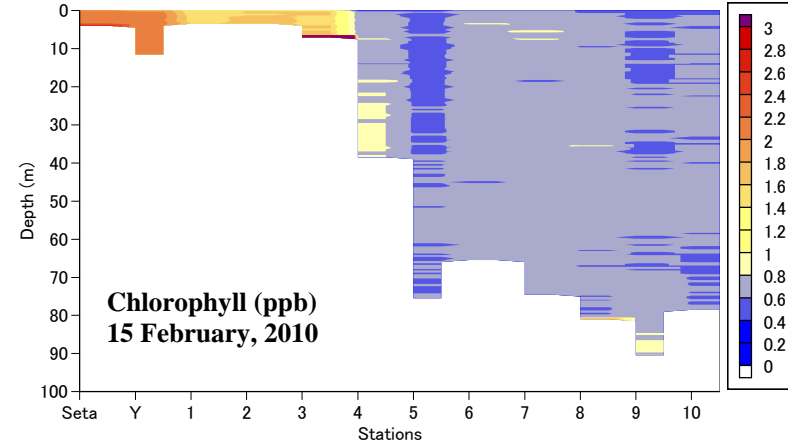
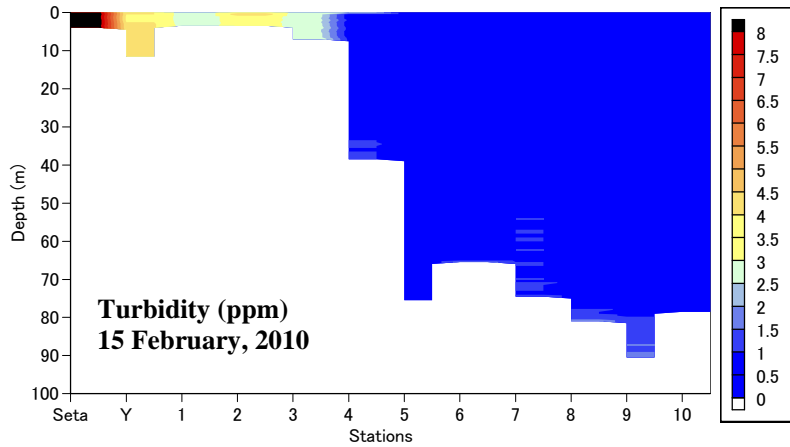
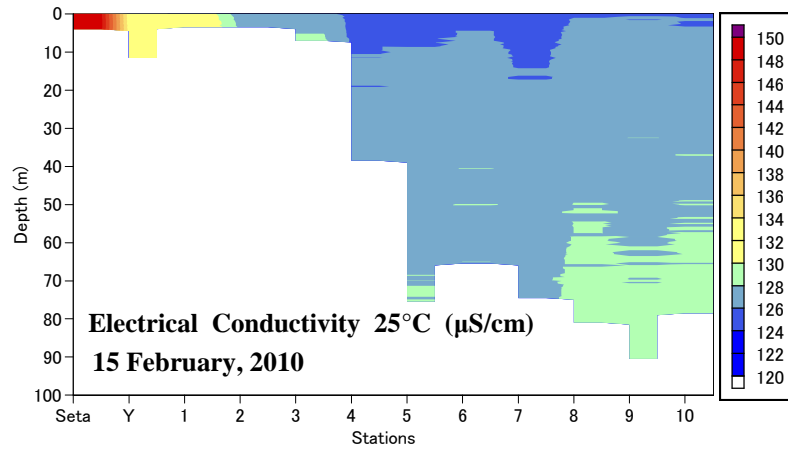
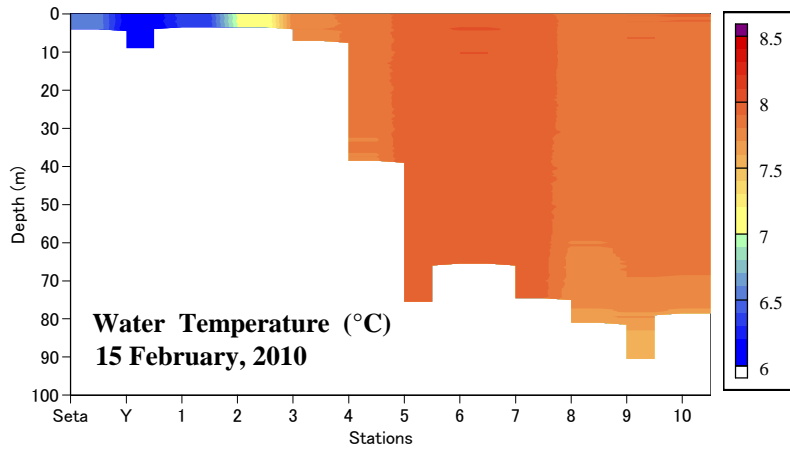
Sta. 9



2010年のびわ湖 Sta. 9 (今津沖) の水質鉛直分布 (滋賀大学教育学部による)

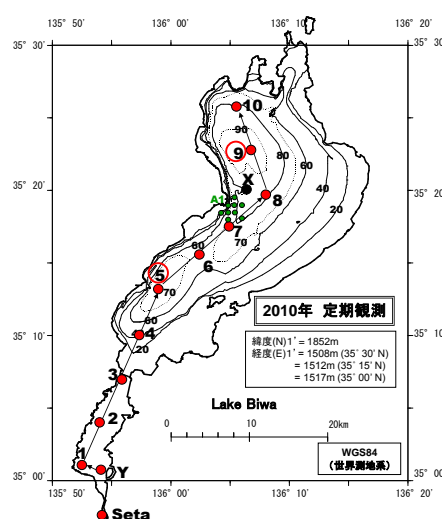
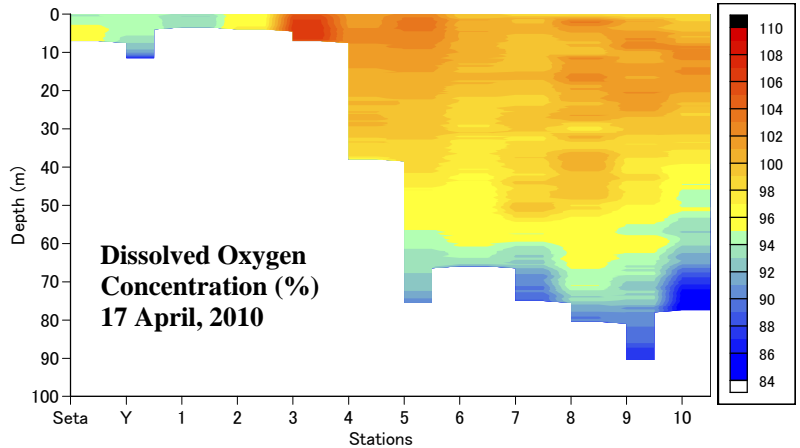
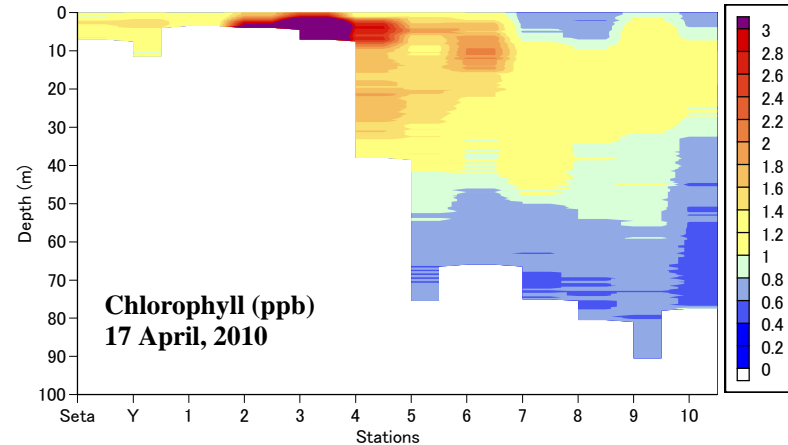
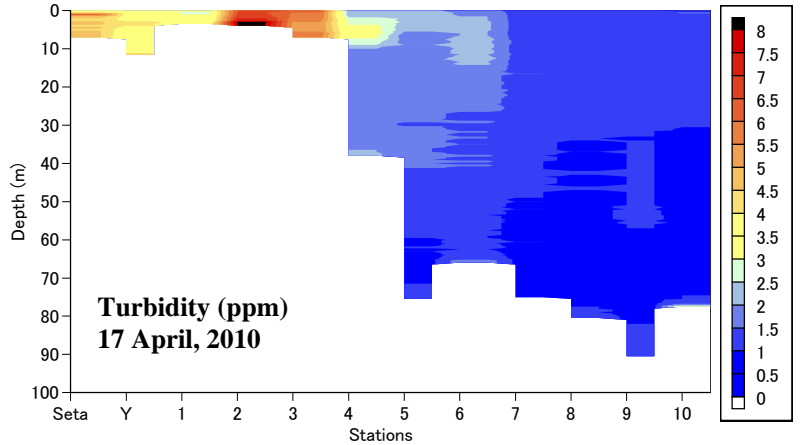
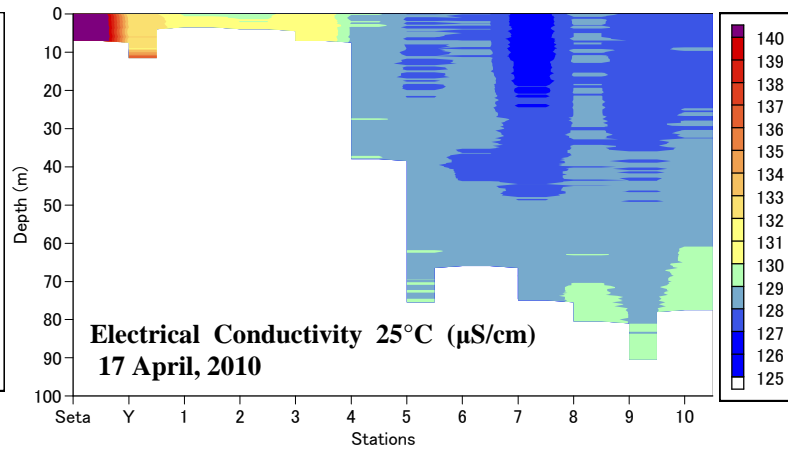
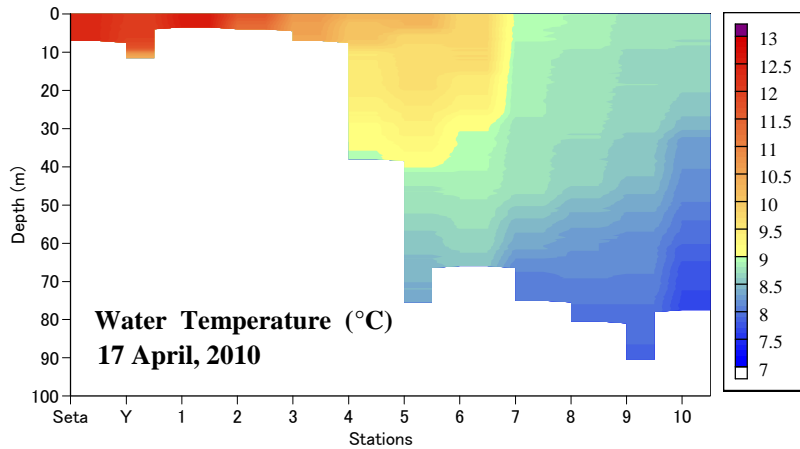


**2010年  
1月10日**

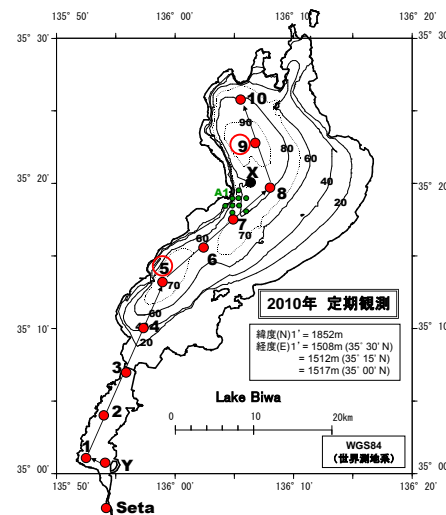
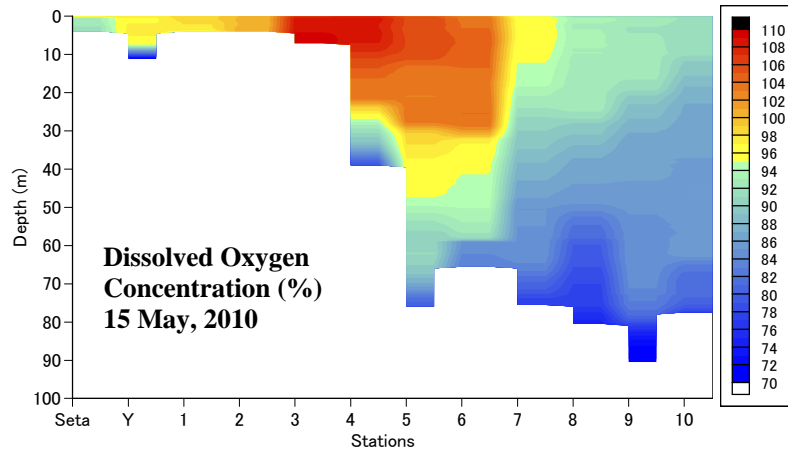
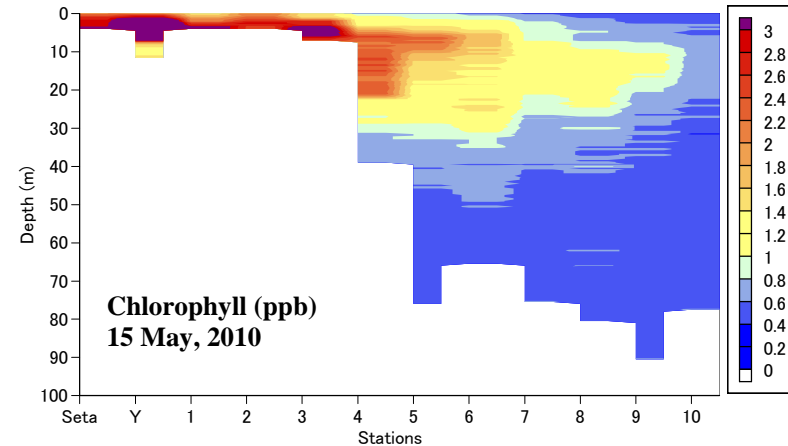
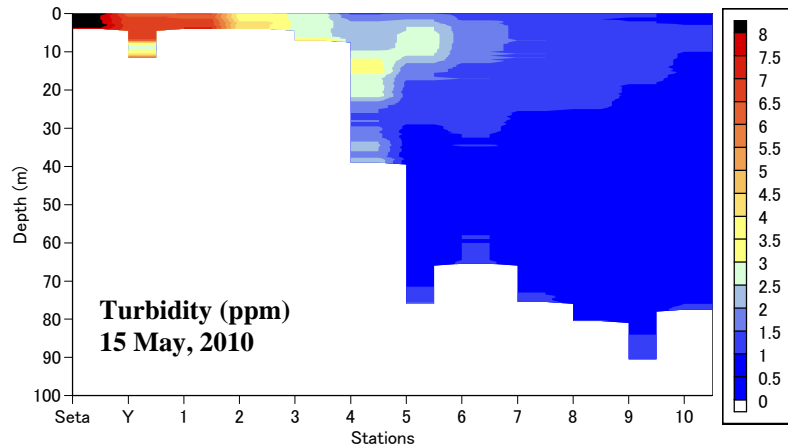
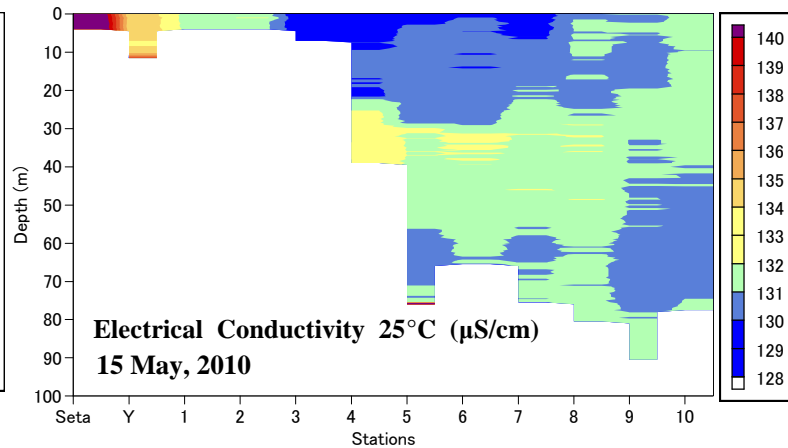
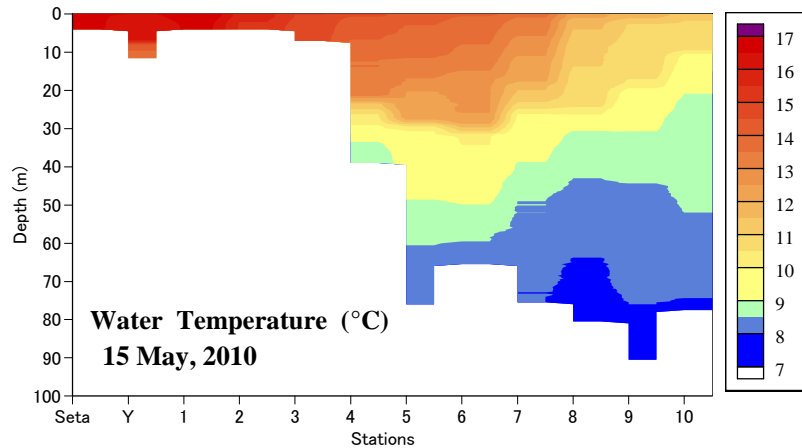


**2010年  
2月15日**



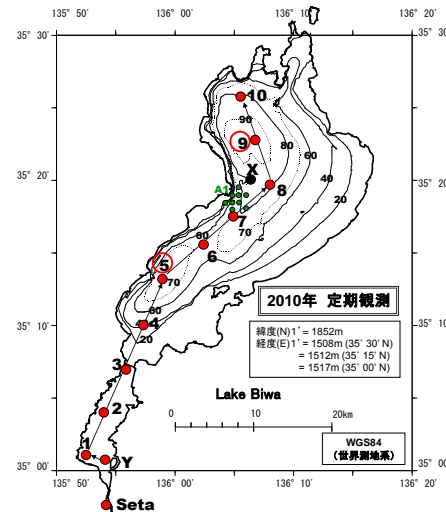
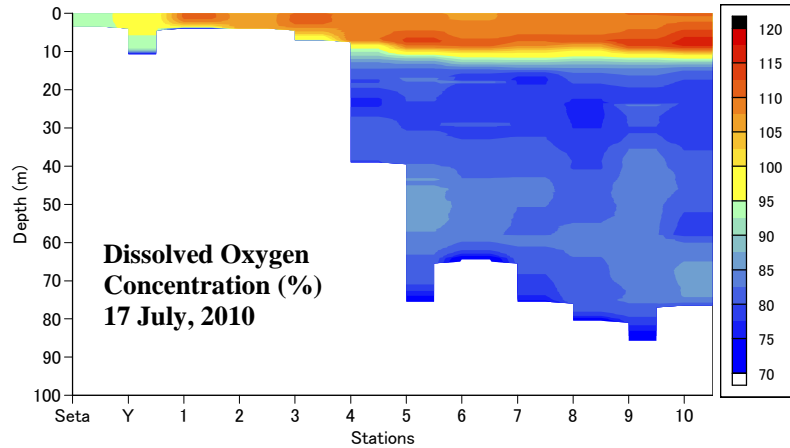
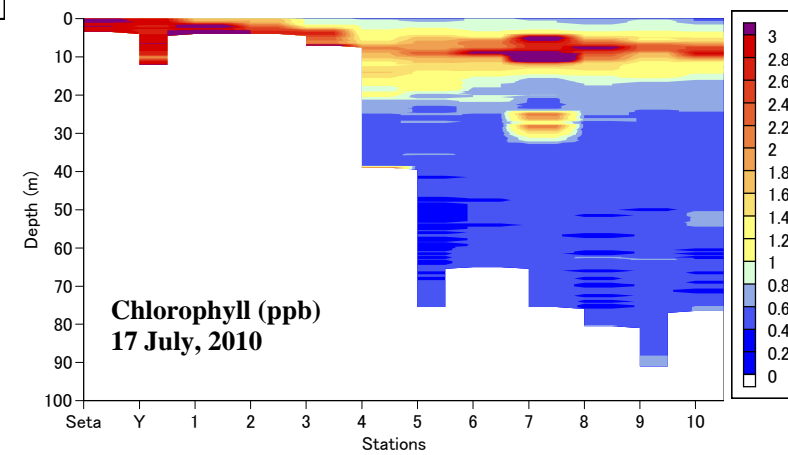
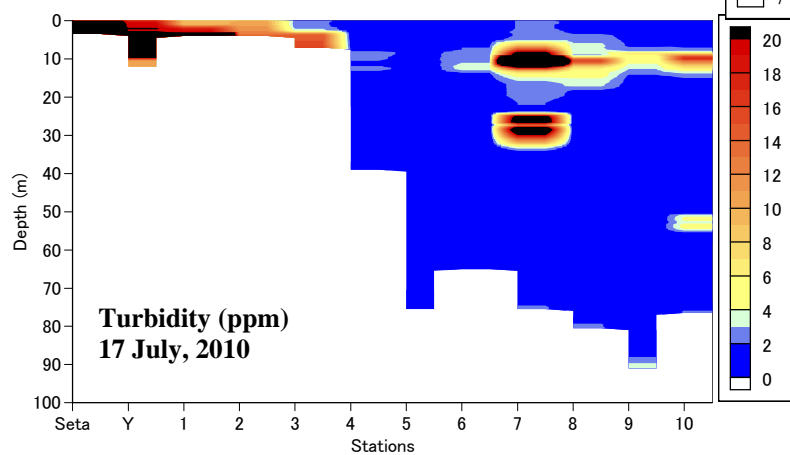
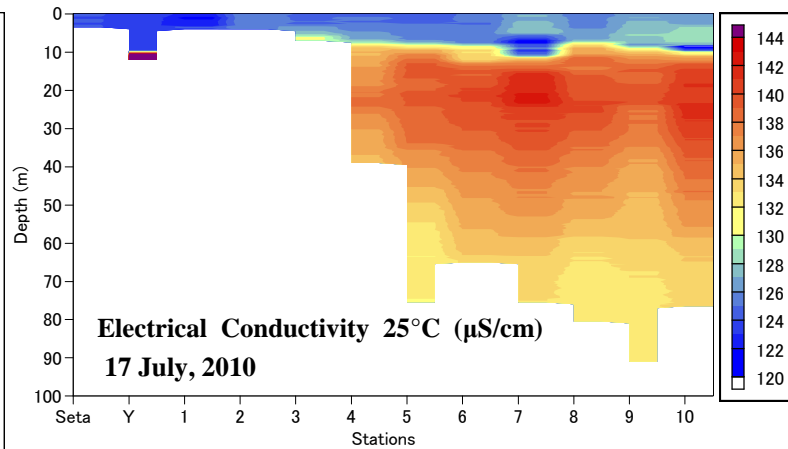
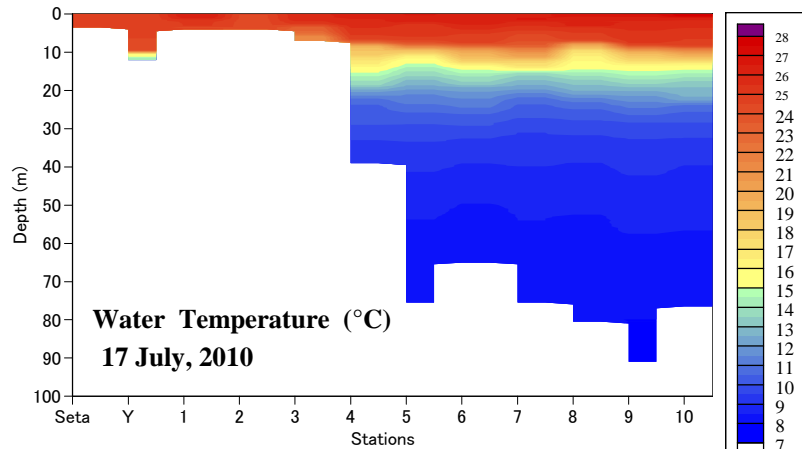


**2010年  
4月17日**

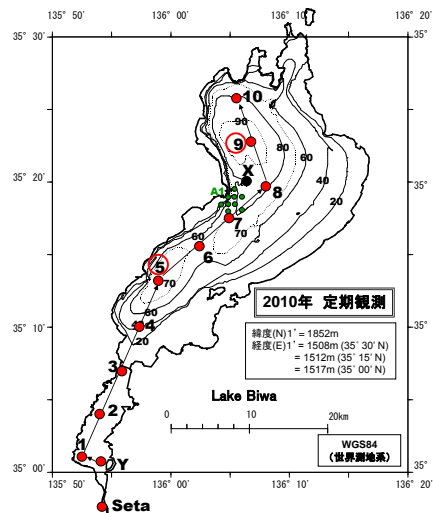
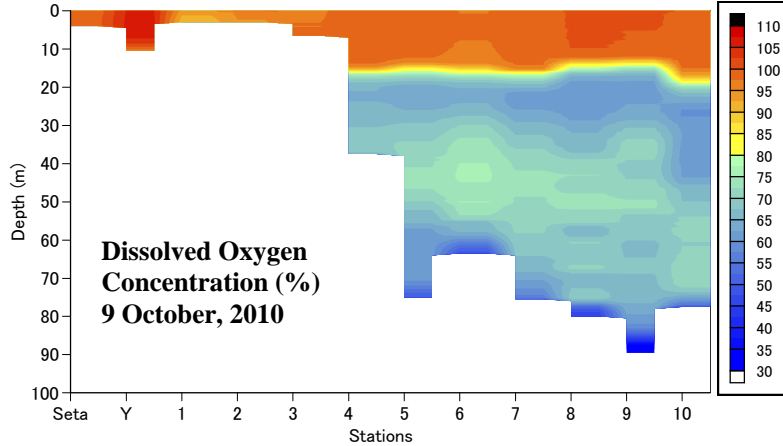
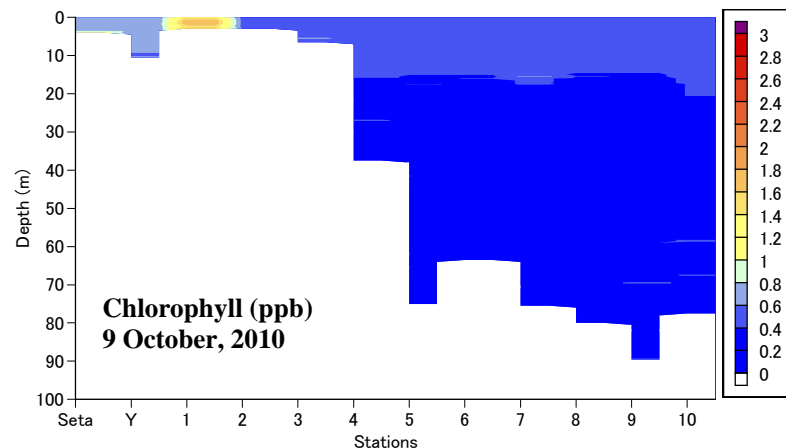
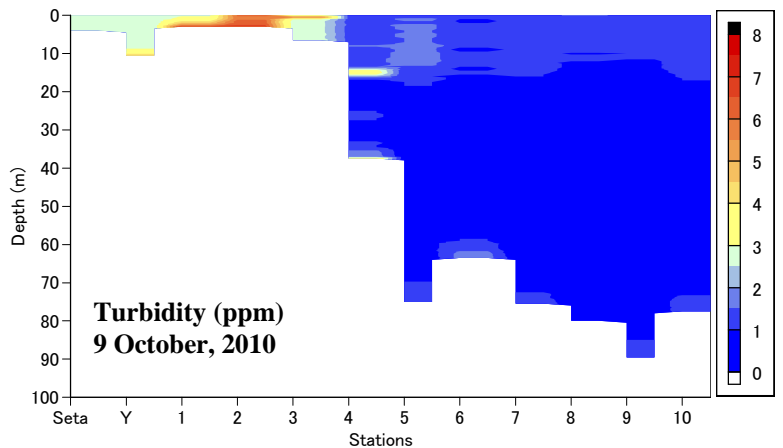
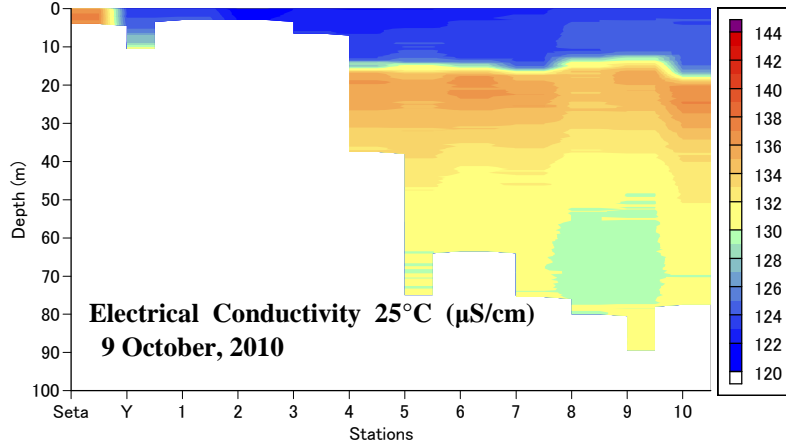
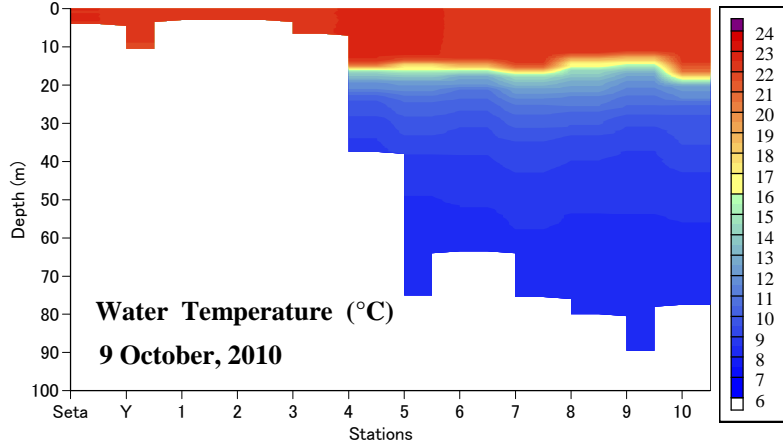


**2010年  
5月15日**

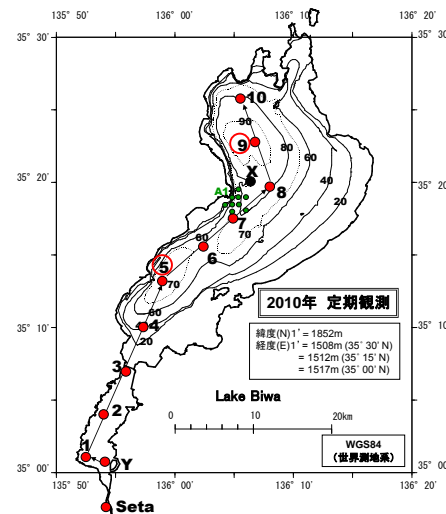
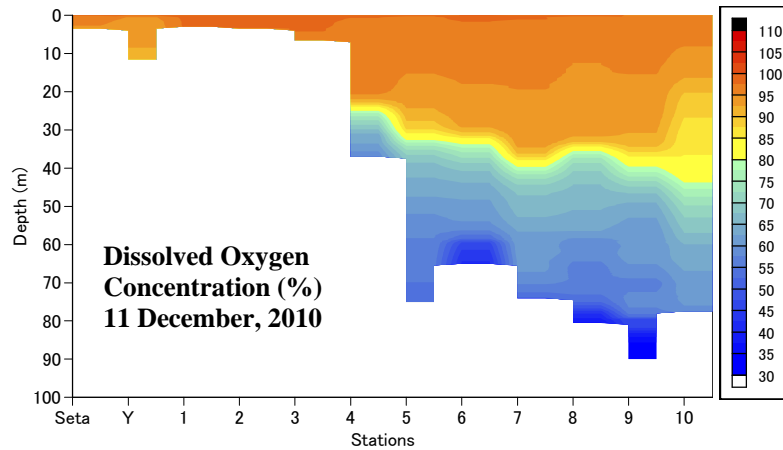
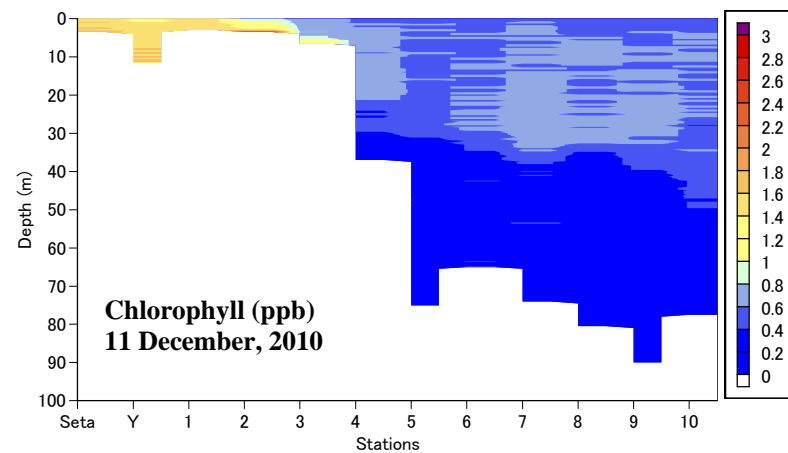
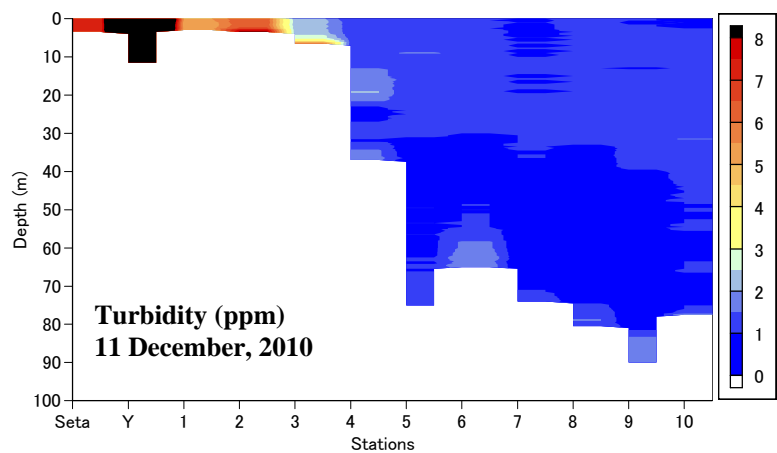
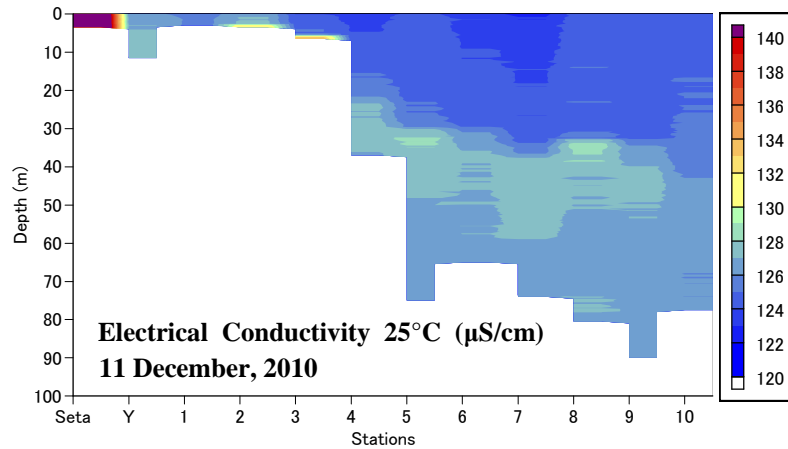
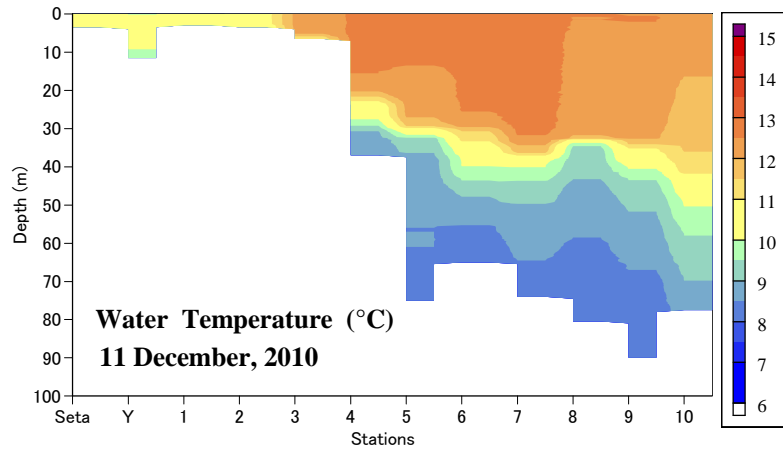




**2010年  
7月17日**

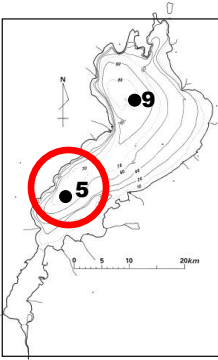


**2010年  
10月9日**

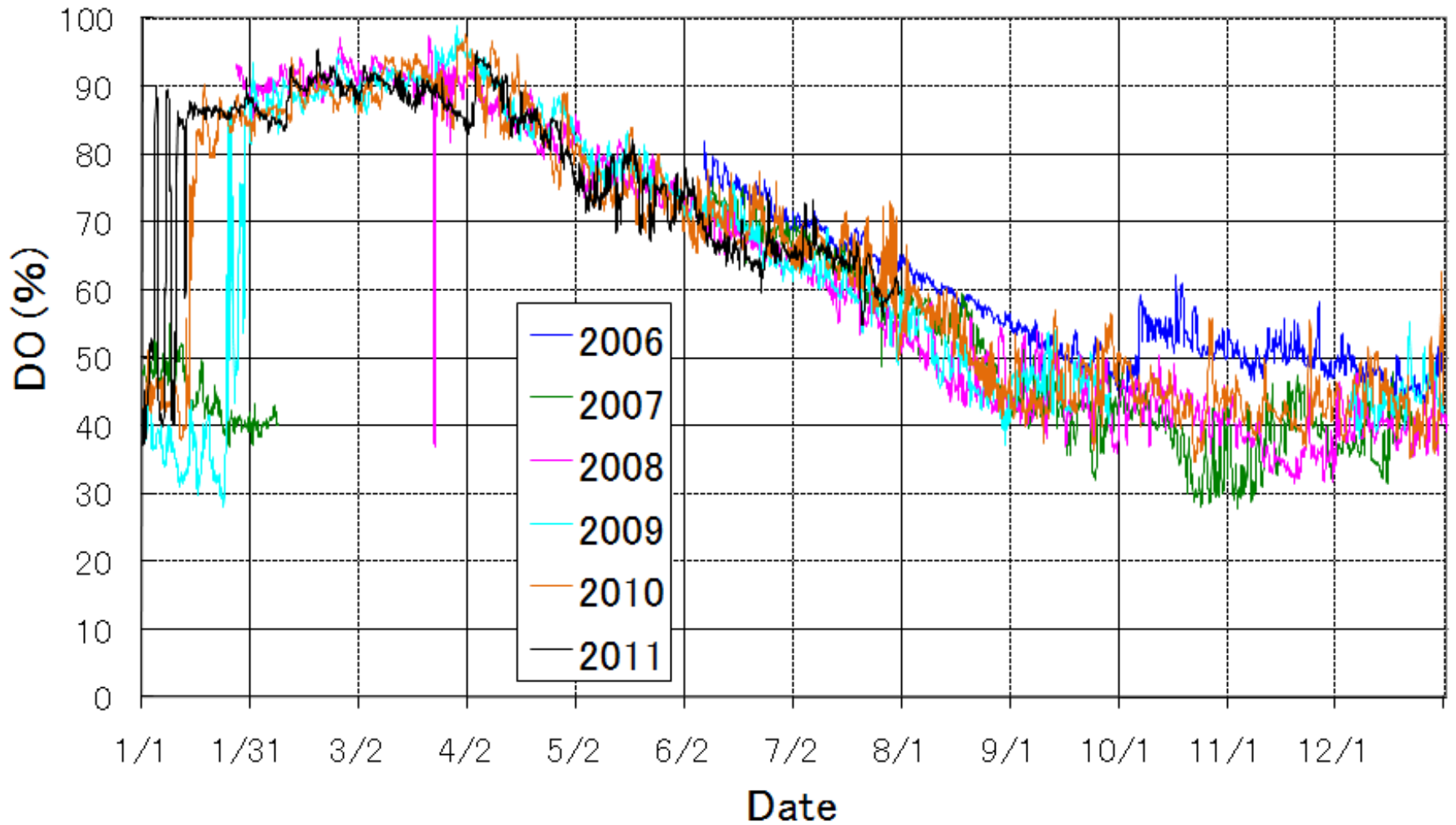


**2010年  
12月11日**

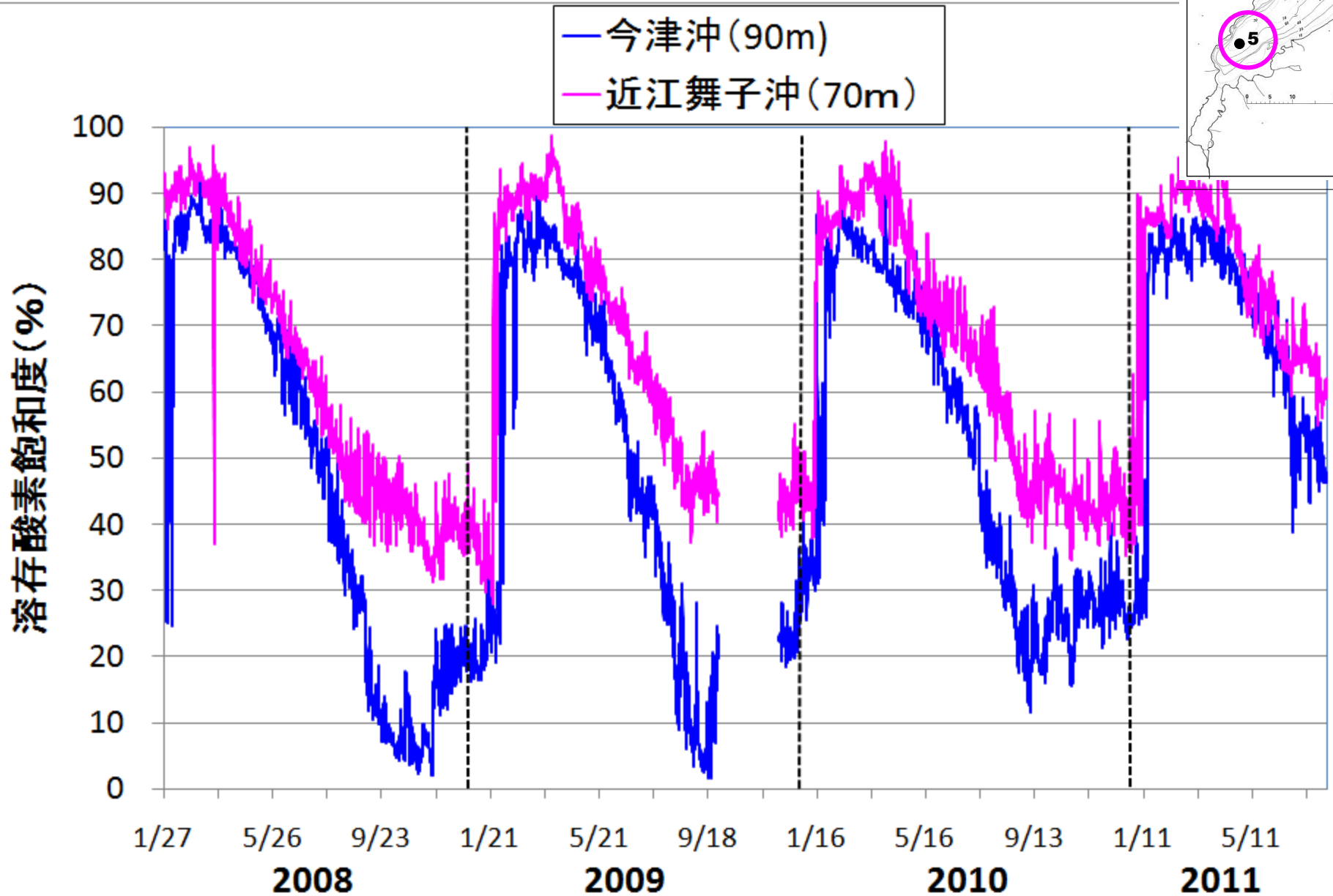
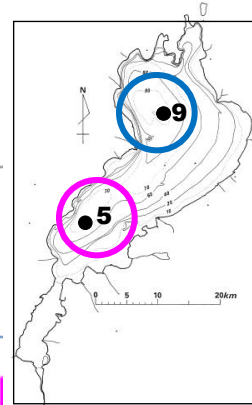




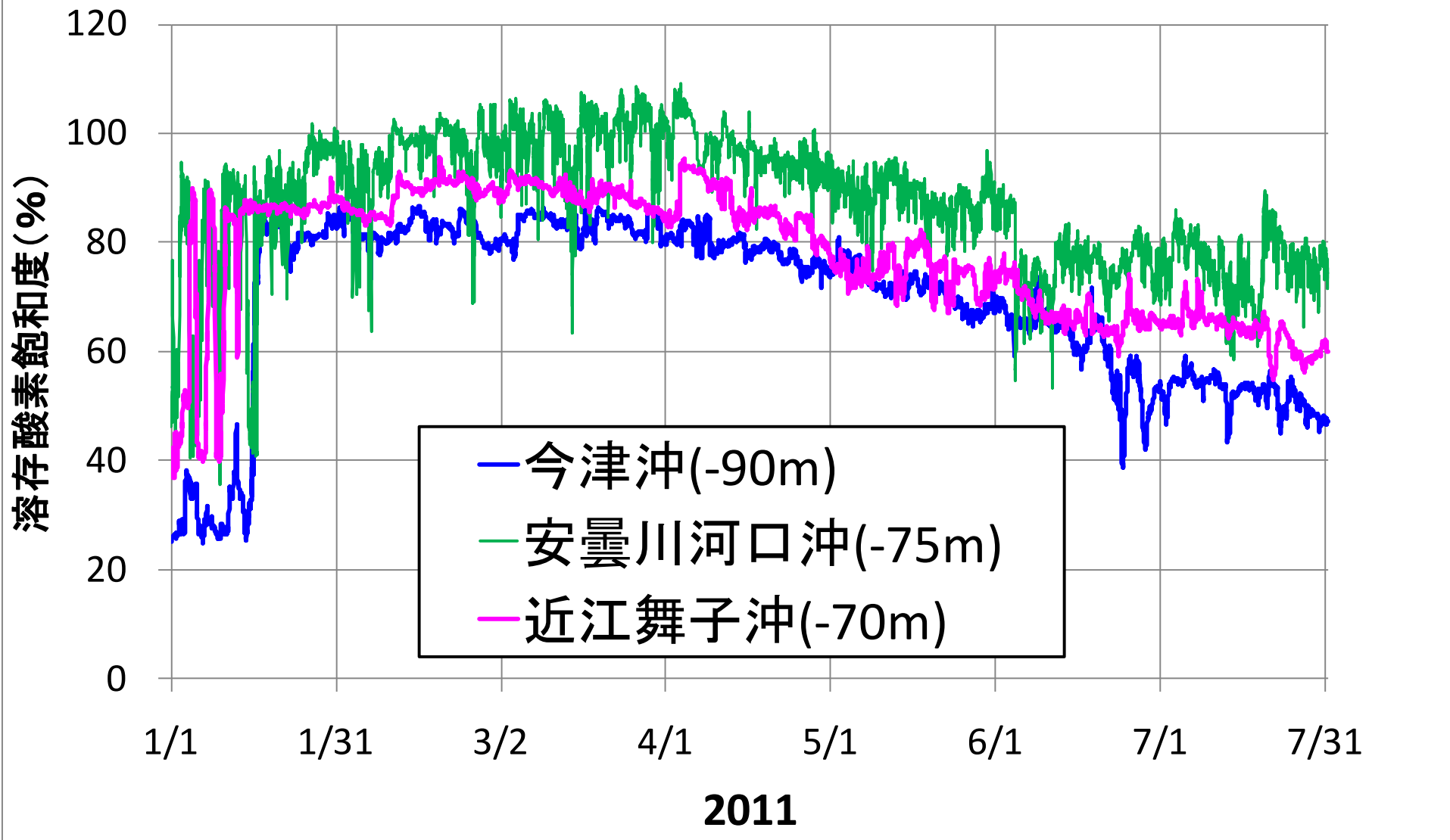
近江舞子沖(水深70m)の湖底直上における溶存酸素飽和度の変動



# 湖底直上における溶存酸素飽和度の変動

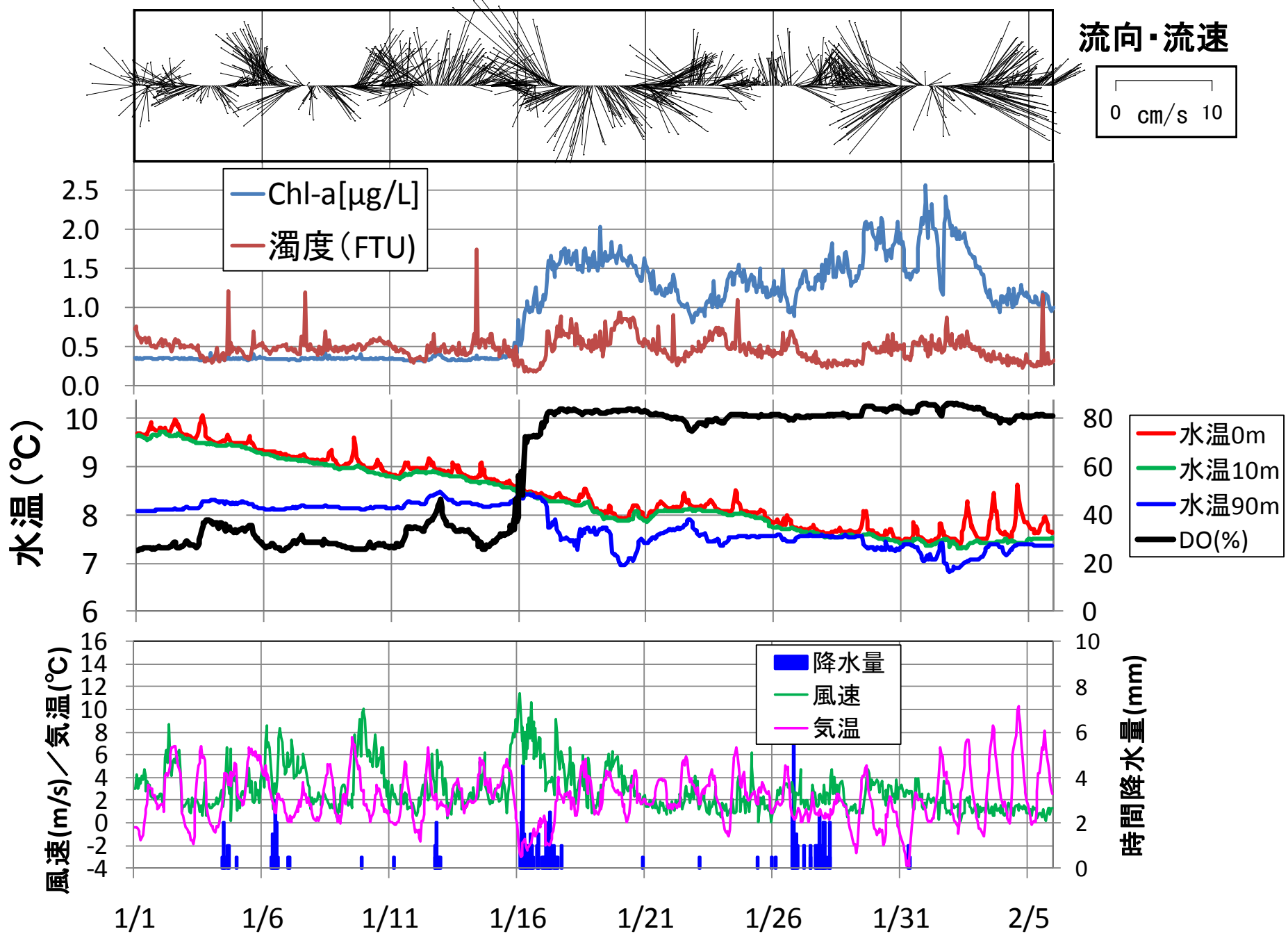


# びわ湖の底層における溶存酸素飽和度の変動

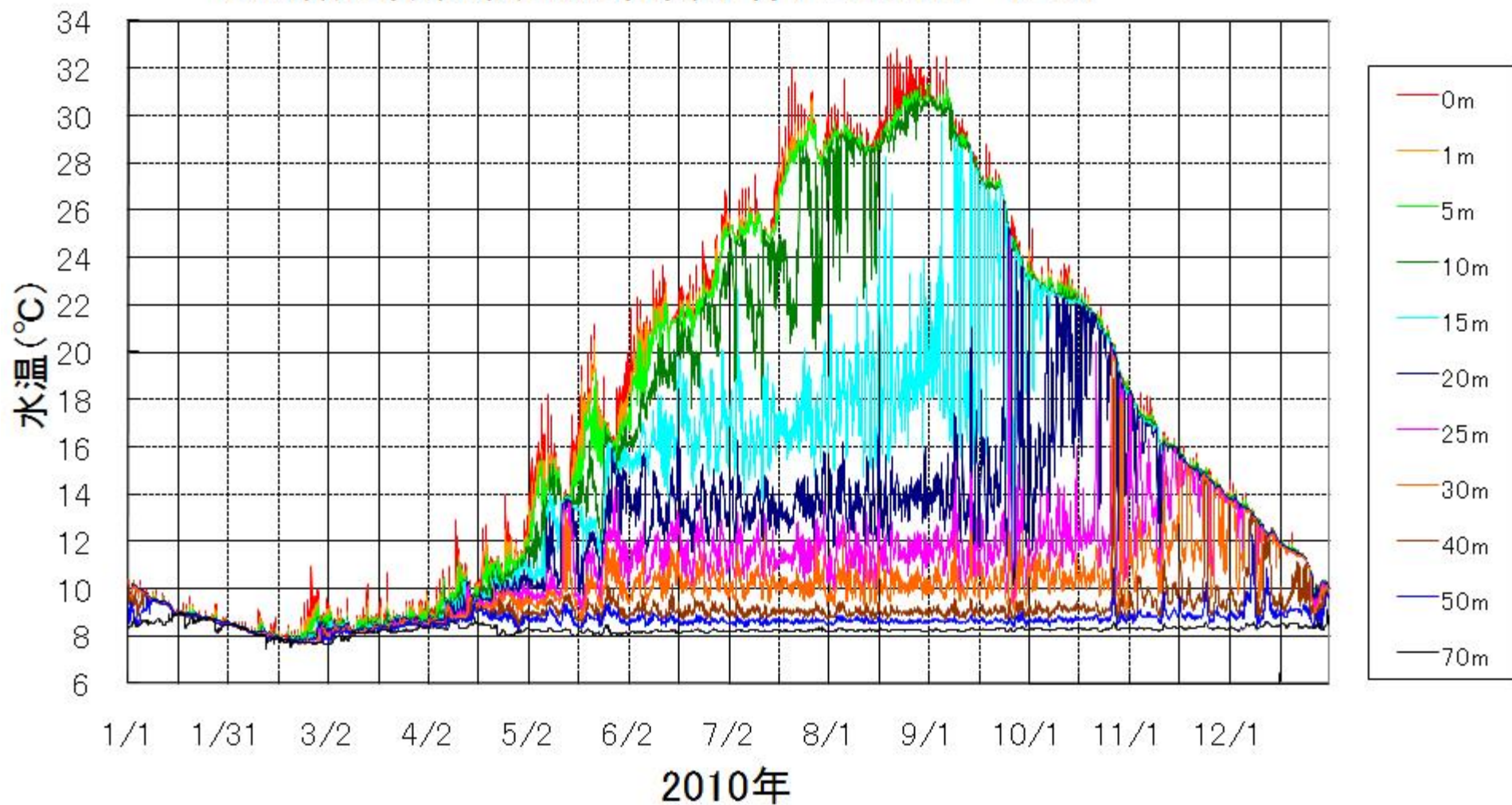




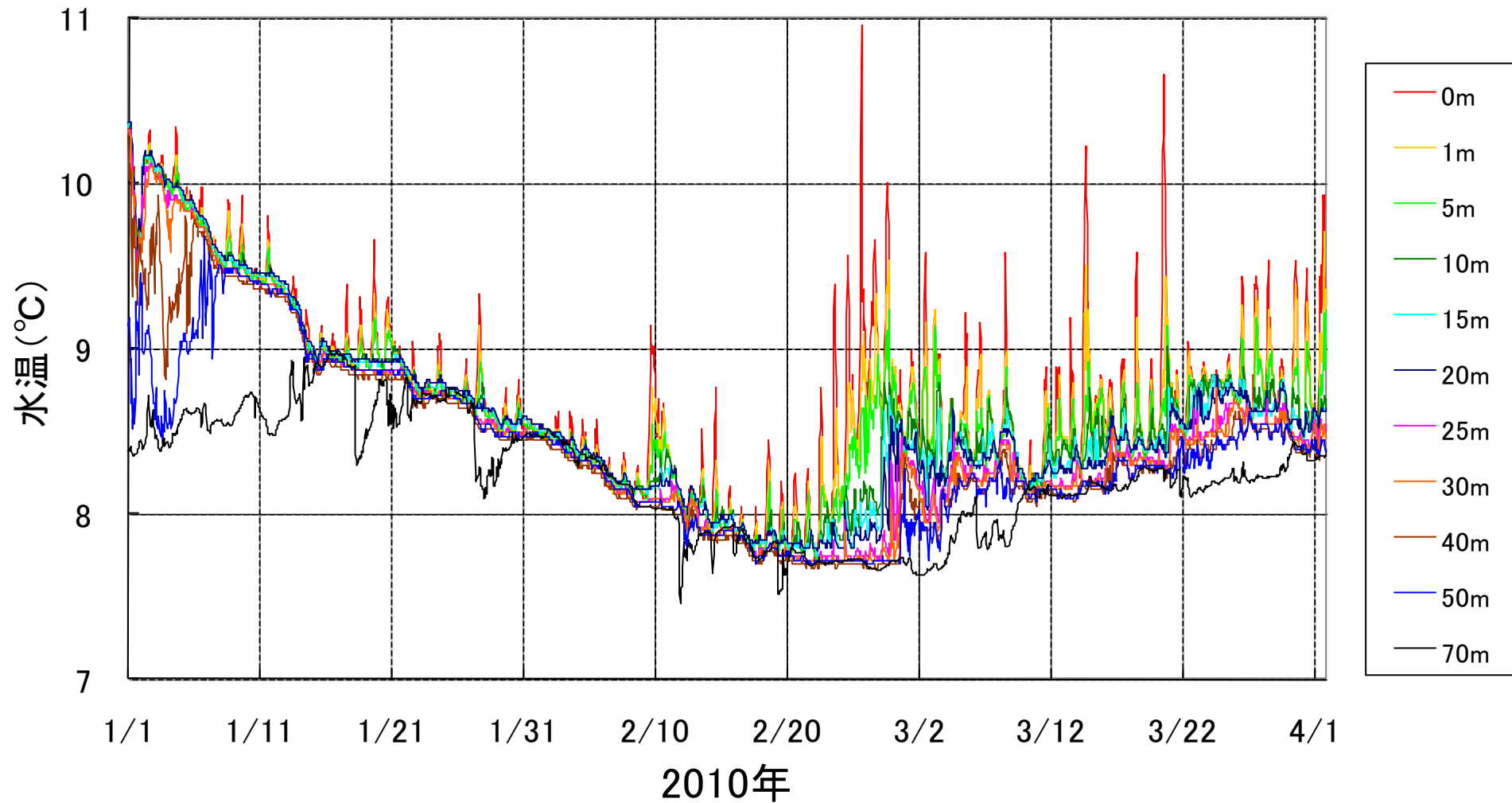
# 今津沖底層における流況と水質の変動 2011年1月～2月



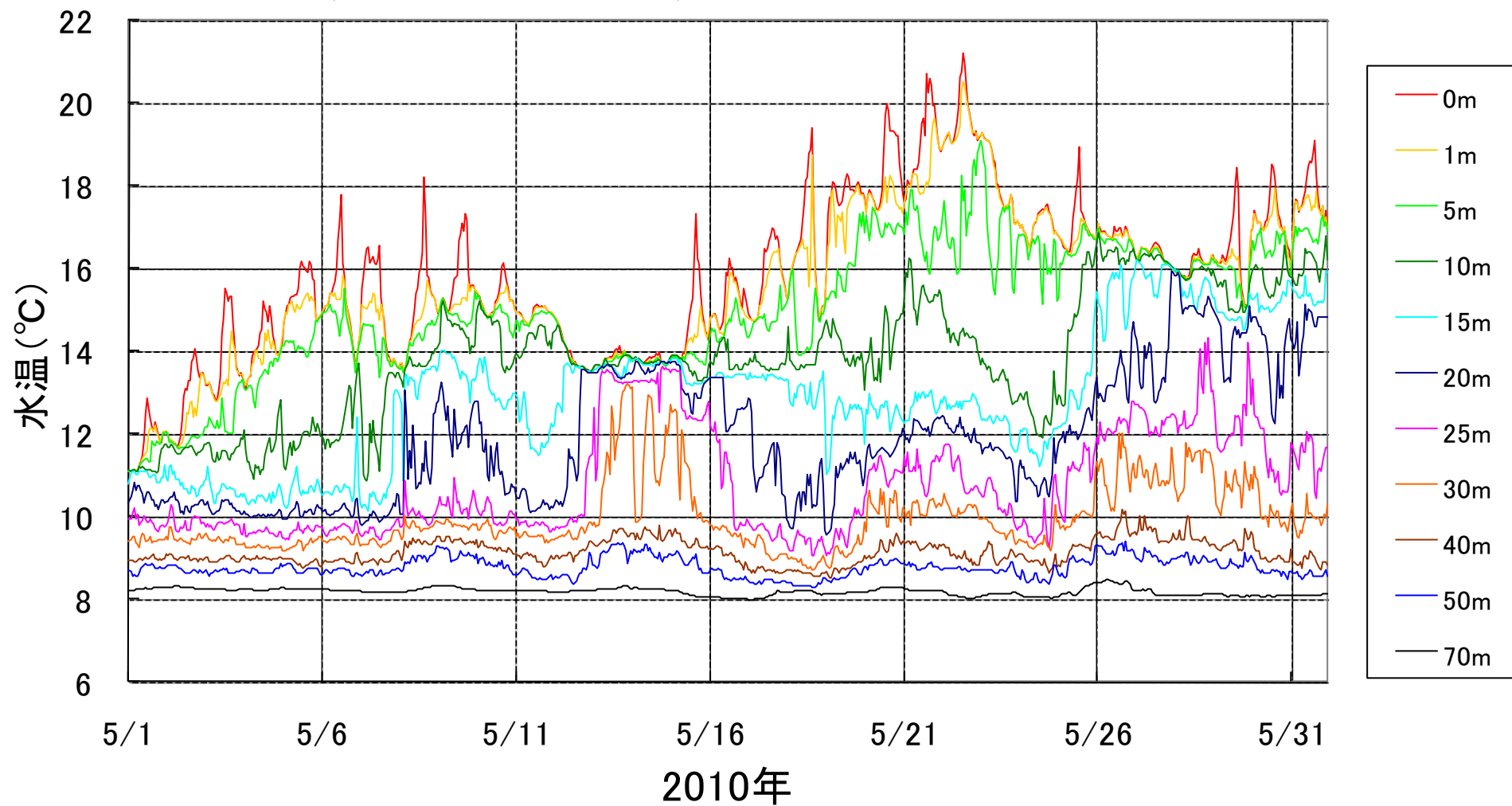
びわ湖の各層水温(近江舞子沖) 2010.1.1 - 12.31



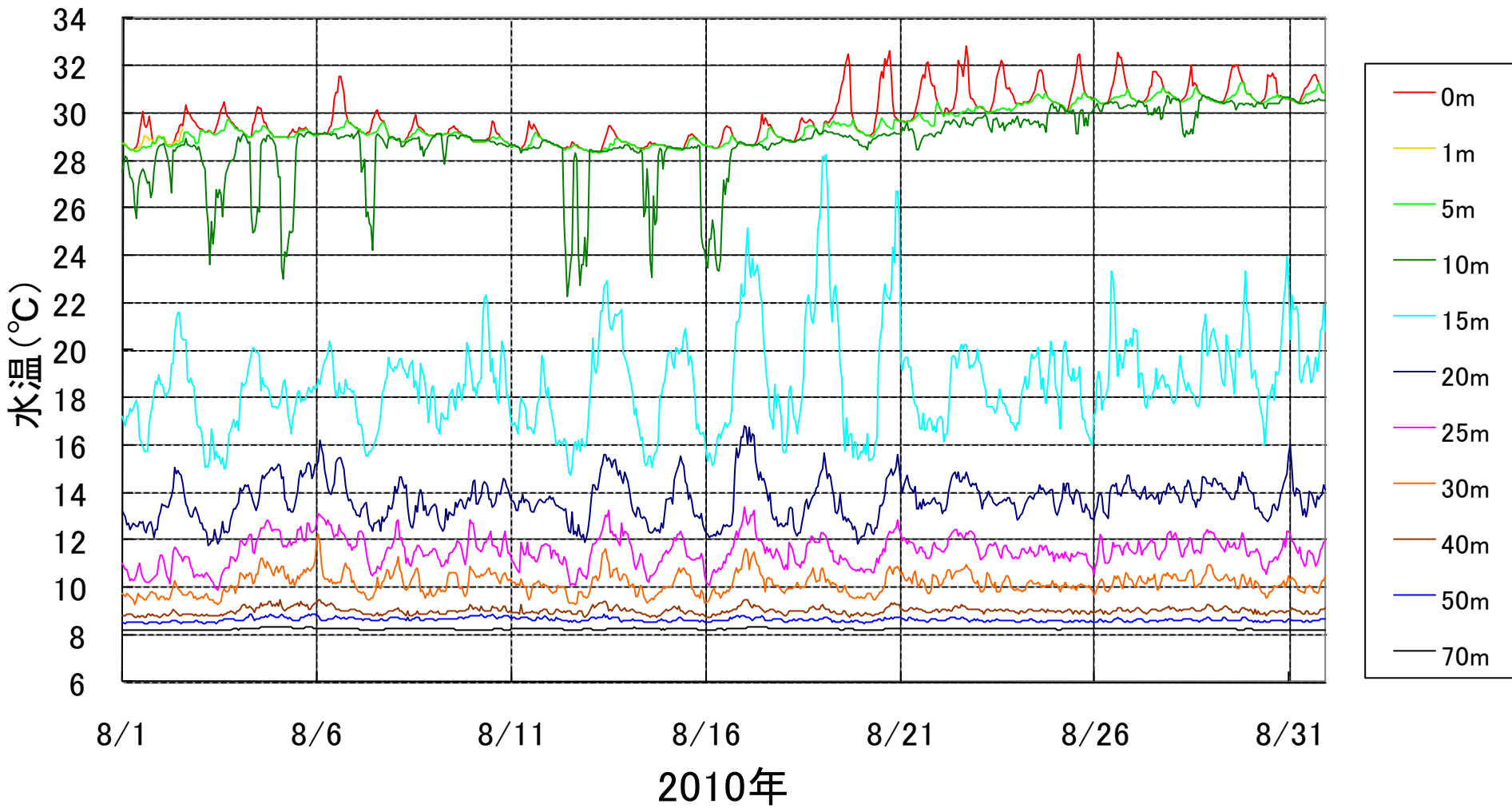
びわ湖の各層水温(近江舞子沖) 2010.1.1 - 4.1



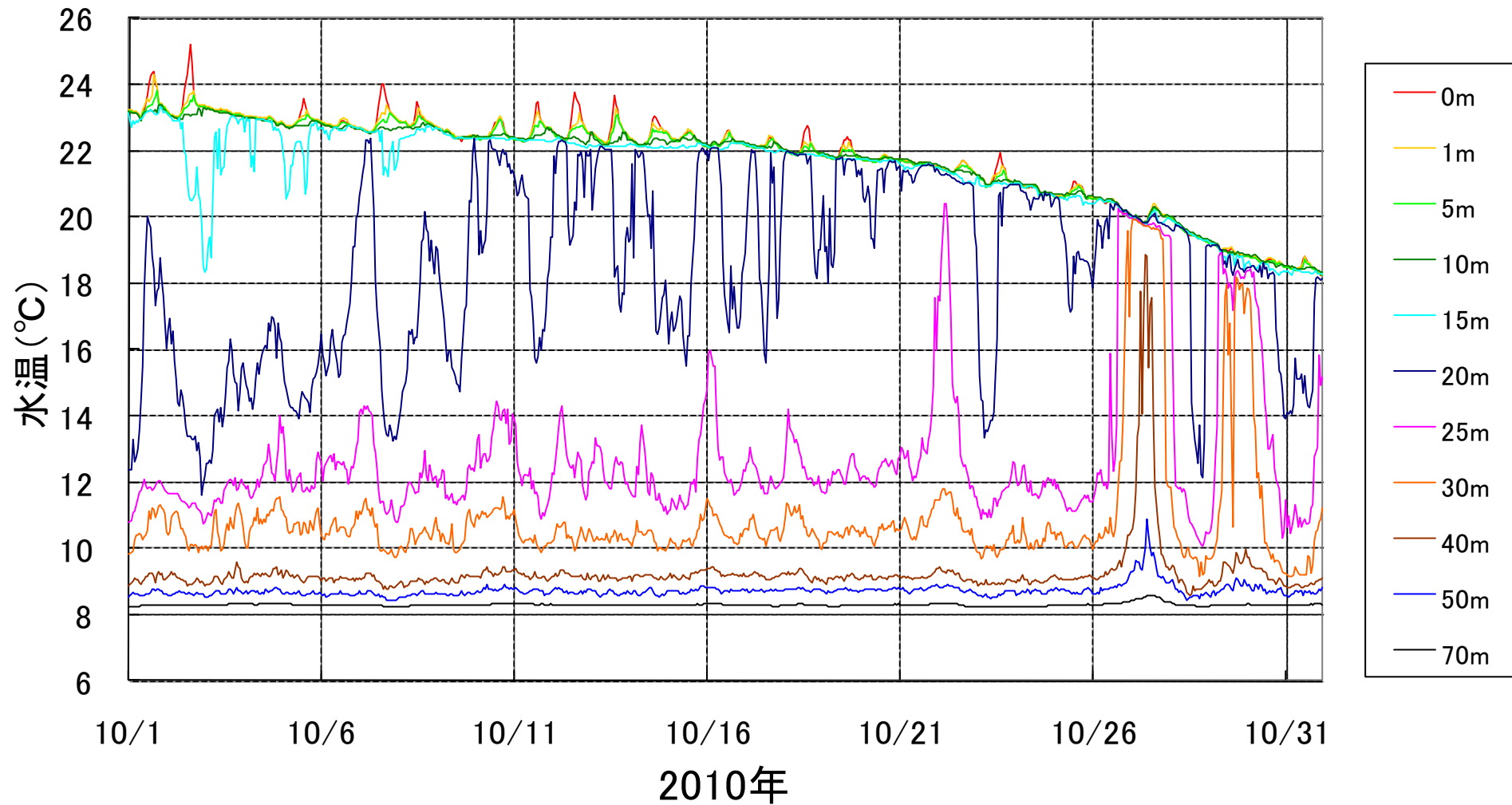
びわ湖の各層水温(近江舞子沖) 2010.5.1 - 5.31



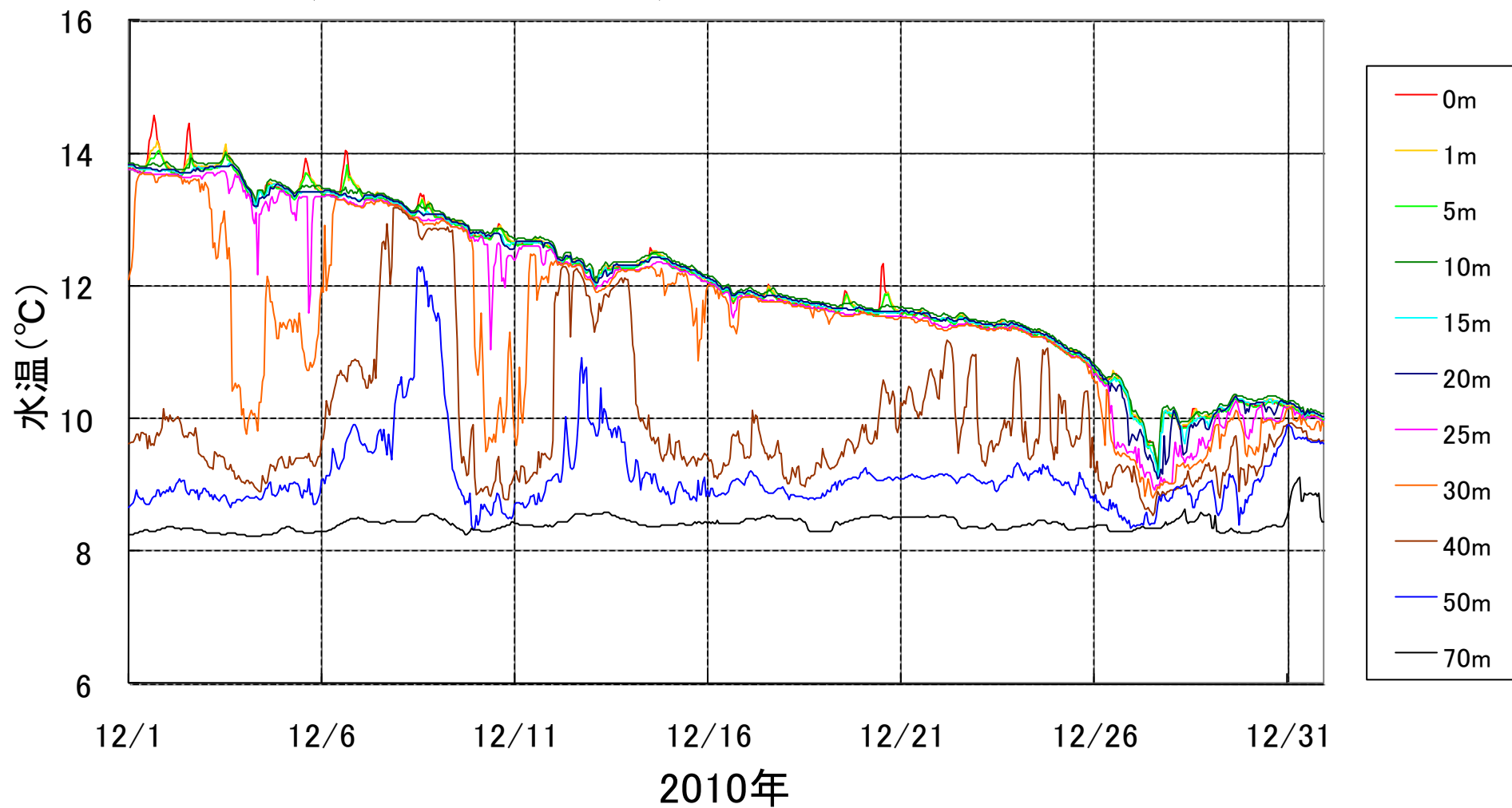
びわ湖の各層水温(近江舞子沖) 2010.8.1 - 8.31



びわ湖の各層水温(近江舞子沖) 2010.10.1 - 10.31

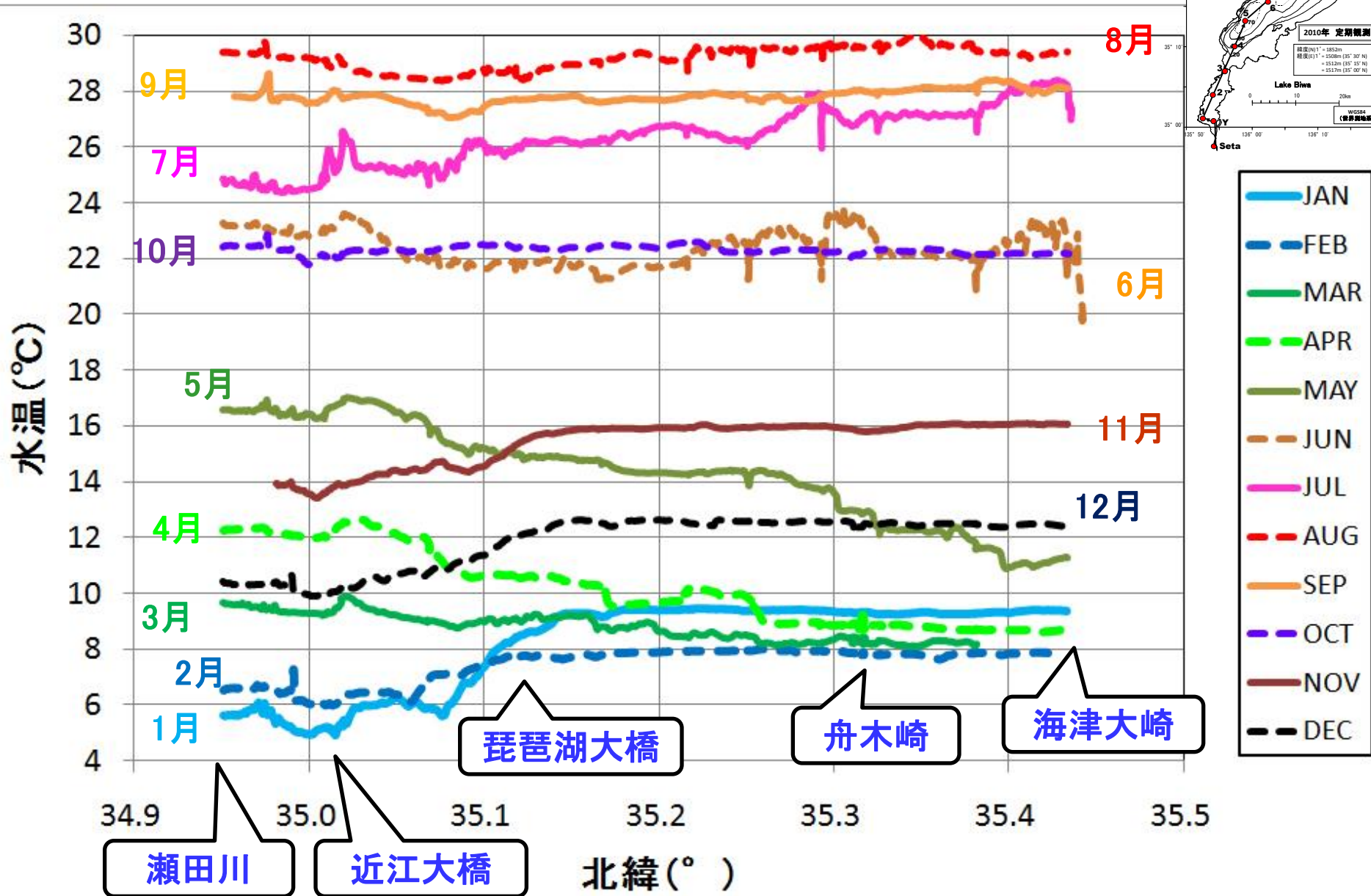


びわ湖の各層水温(近江舞子沖) 2010.12.1 - 12.31



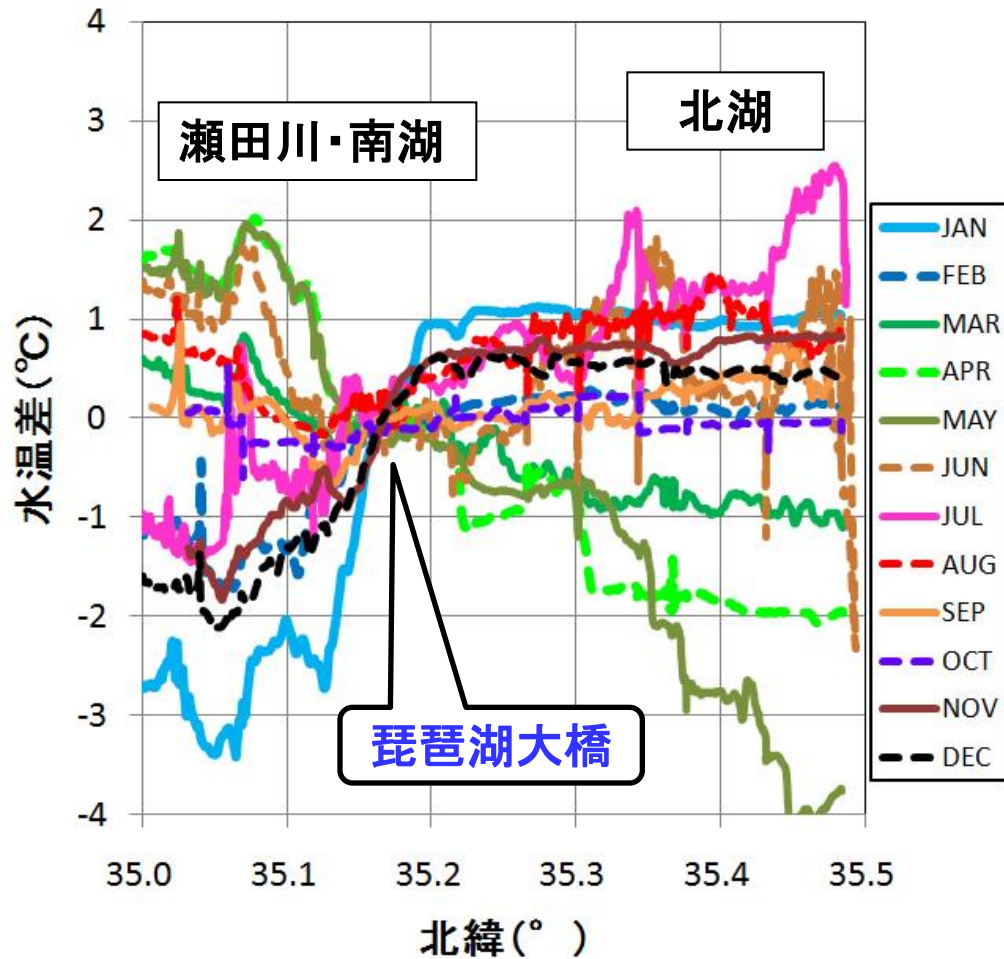


# 表面水温の曳航観測結果 2010年1~12月

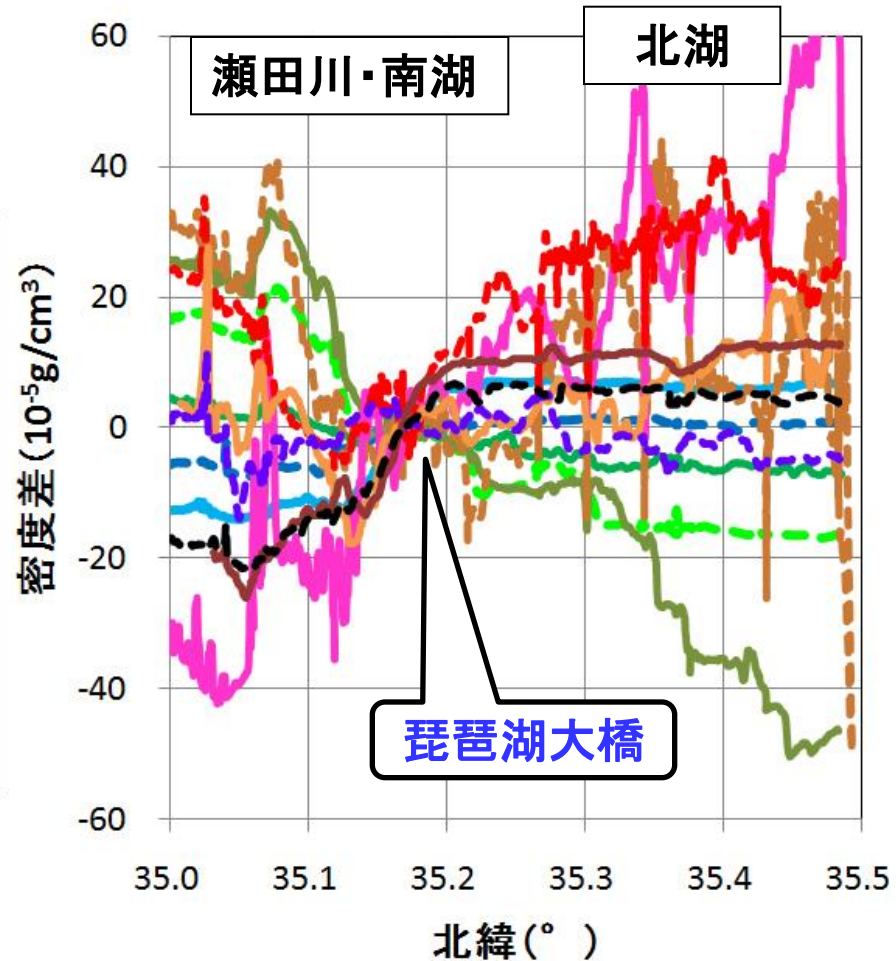


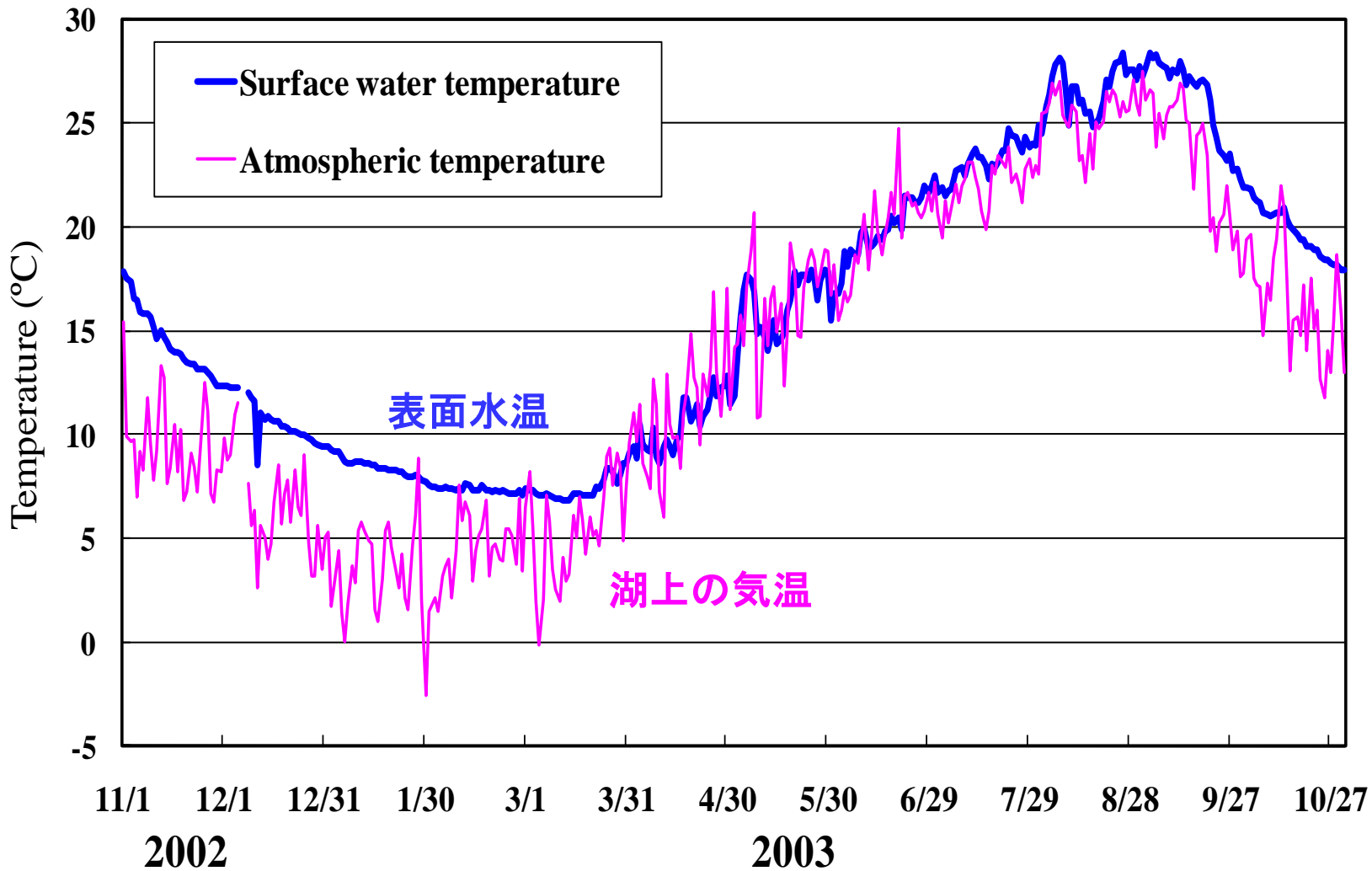
# 表面水温の曳航観測結果 2010年1~12月 (琵琶湖大橋の値からの偏差)

## 水温差



## 密度差





遠藤ら(2010):テレメータブイによるびわ湖の気象・流況・水質の連続観測  
陸水学雑誌、Vol. 71.



# びわ湖に出現する蜃気楼



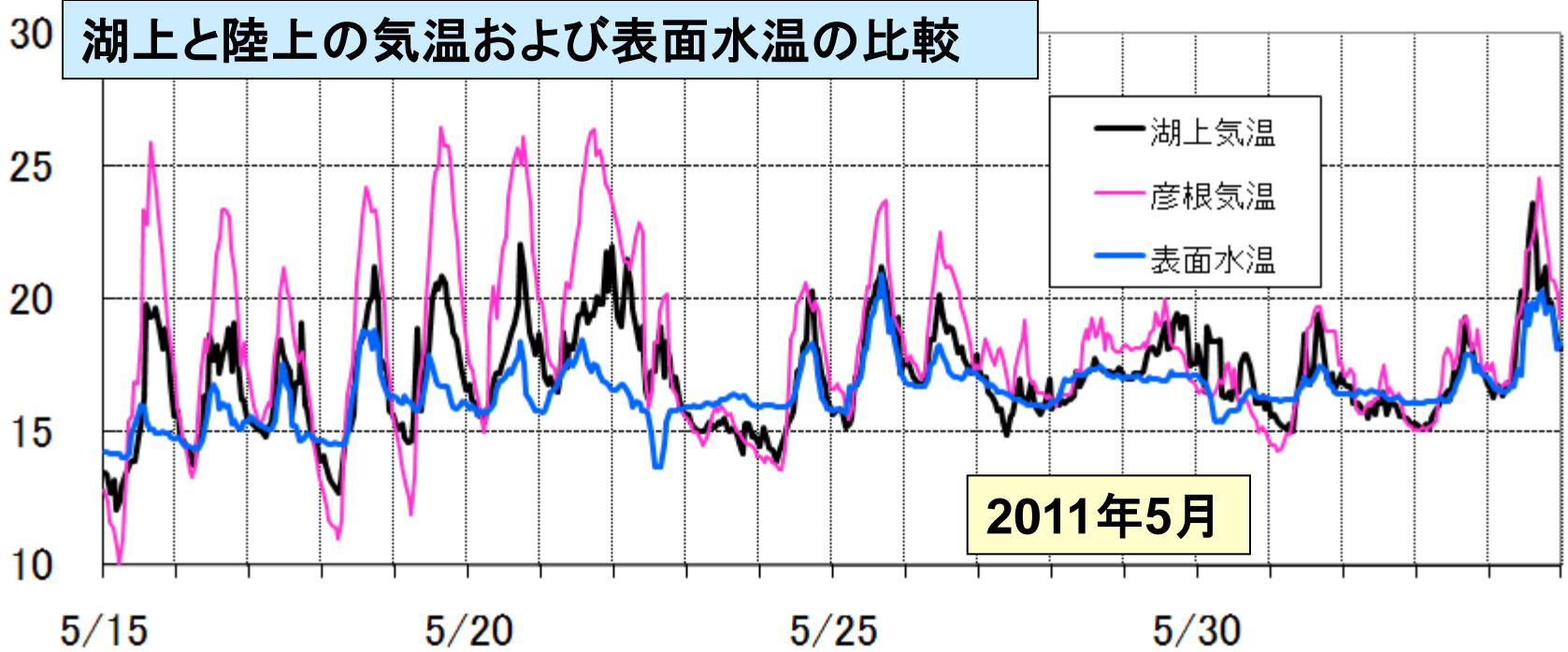




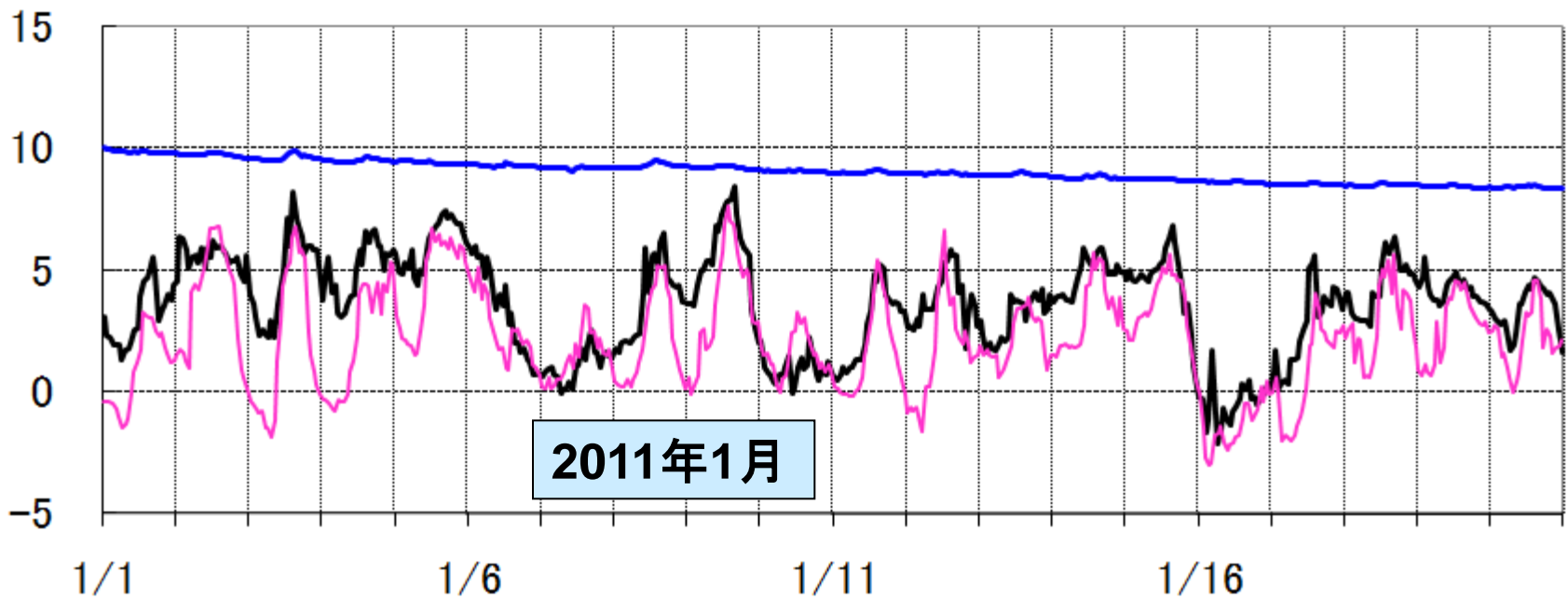


# 湖上と陸上の気温および表面水温の比較

気温・水温(°C)



気温・水温(°C)



2011



